

Community Partnership of the Ozarks



Annual Report

Answering the Call



**COMMUNITY
PARTNERSHIP**

Working Together to Build Strong Communities

2021

Board of Directors

Jim Arnott

Sheriff
Greene County Sheriff's Office

Brad Auge

Store Director
Hy-Vee

Rob Baird

CEO & Chairman of the Board
Phenix Marble

Joselyn Baldner (Vice President)

President and CEO
Central Bank of the Ozarks

Greg Burris

President and CEO
United Way of the Ozarks

David Cook

Community Bank President
The Bank of Missouri

Lisa Crawford

31st Circuit Manager
Greene County Children's Division

Allen Criger

Coordinator of Operations
Greene County Juvenile Office

Dr. Shannon Cuff

Dean of the School of Education & Child
Development
Drury University

Bridget Dierks

Vice President of Programs
Community Foundation of the Ozarks

Dr. Janice Duncan

Community Volunteer

Brad Erwin

President
Paragon Architecture

Shelley Evans (Treasurer)

Senior Vice-President
Guaranty Bank

Jason Gage

City Manager
City of Springfield

Dr. Bud Greve

Community Volunteer

Judy Hadsall

President and CEO
Multipl Credit Union

Dee King

Chief of Staff
Burrell Behavioral Health

Ashley Krug

Market Development Coordinator
City of Springfield

Dr. Grenita Lathan

Superintendent
Springfield Public Schools

Barbara Lucks

Organizational Consultant

Rusty MacLachlan

Greene County Commissioner

Anne Sallee Mason (President)

Attorney
Neale & Newman Law Firm

Brian McDonough (Secretary)

Vice President & General Manager
Gray Media Group

Scott Meier

General Manager
Midwest Family Broadcasting

Matt Morrow

President & CEO
Springfield Area Chamber of Commerce

Charlie O'Reilly

Vice Chairman of the Board
O'Reilly Auto Parts

Leslie Peck

President
Peck's Insurance and Financial Services

David Pennington

Chief
Springfield Fire Department

Beth Polivka

Chief Nursing Officer
Cox Health

BJ Roberts

Vice President - Finance
Mercy

Carl Rosenkranz

Executive Director
OACAC

Grant Seifried

Account Manager
Springfield Remanufacturing Corporation

Brandon Taylor

Senior Business Process Analyst
Jack Henry

Katie Towns

Director
Springfield-Greene County Health
Department

Jaimie Trussell

CEO
Council of Churches of the Ozarks

Paul Williams

Chief of Police
Springfield Police Department

Annual Report Contents

Messages from the Board
President and President/CEO
Pages 3-4

Our Community Impact and
Financials
Pages 5-6

Early Childhood and Family
Development
Pages 7-10

Affordable Housing and
Homeless Prevention
Pages 11-14

Community and
Neighborhood Development
Pages 15-18

Prevention and Youth Support
Pages 19-22

Our Generous Donors
Pages 23-26

Visit us at www.cpozarks.org

Letter from the Board President



Anne Sallee Mason
President
Board of Directors

The work of the Community Partnership of the Ozarks (CPO) and its Collaboratives over the past year was once again taken to a whole new level with the opening of The O'Reilly Center for Hope. To better assist those living in poverty or experiencing homelessness, CPO now offers one location housing multiple partner agencies. Having numerous services in a single site reduces the many barriers to receiving assistance that previously existed. Some of the partner agencies providing services include: Missouri Works Assistance, OACAC, Springfield Community Land Trust, WIC, Veterans Administration, Habitat for Humanity, Isabel's House, Legal Services of Southern Missouri, and Burrell Behavioral Health.

The O'Reilly Center for Hope also offers on-site resources, including computer and internet access, laundry, shower and mail services, and hygiene and first aid supplies, along with free training and education programs. The Center is in the former Pepperdine Elementary School at 1518 E. Dale.

Additionally, CPO has continued to work in other ways with our community partners to address the problems caused

by the ongoing COVID-19 pandemic and its impact on Housing, Homelessness, Transportation, Food Access, Child Abuse and Neglect, Early Childhood and Education, Mental Health, and Drug and Alcohol Misuse in our community. In our 21-county service area, we served 62,585 people. In addition to our dedicated team, we had 4,715 volunteers who donated more than 25,000 hours of service.

The continued success of CPO is due to the hard work and dedication of Janet Dankert, President/CEO, her Leadership Team, and their committed staff. We are so thankful for the tireless efforts of the CPO team over the past year and are blessed to have the support of so many community partners and board members. Thank you for your support of CPO. With your help, CPO can continue to do amazing work in our beloved community to accomplish our mission of building resilient children, healthy families, and strong neighborhoods & communities.

A handwritten signature in black ink that reads "Anne Sallee Mason". The signature is written in a cursive, flowing style.

Letter from the President & CEO

Janet Dankert
President/CEO



The last year was again one filled with uncertainty and growing needs in our community as the COVID-19 pandemic continued to impact us all. What we all thought would be an experience we could quickly put behind us turned into something we are still dealing with now nineteen months later. I am always proud of our team at CPO...they are the heart and soul of our organization. Last year they made me prouder than ever as they rose to the challenge of answering the call in so many meaningful ways!

Opening the O'Reilly Center for Hope answered the call made more than 20 years ago when our community had a goal to create a one-stop Housing Center in the City's Vision 2020 plan. When shelters had to limit the number of people they could serve due to the pandemic, we answered the call by working with the COVID-19 Task Force to create the Merciful Nights emergency hotel shelter program, which provided shelter for more than 1,300 unsheltered individuals during the last year. This program saved lives by protecting an already vulnerable community.

Focusing on the importance of mental health awareness was especially

significant last year as early research shows that negative mental health outcomes increased for many people as a result of the pandemic. We answered the call by continuing to provide Mental Health First Aid and Signs of Suicide trainings to more than 5,000 individuals and students in our region.

Our early childhood staff answered the call by supporting some of the most essential workers in our community, child care providers. Our team provided training and technical assistance while also acting as a sounding board and support system during a truly difficult year. Our Community Collaborative Initiative, the foundation of CPO, answered the call by engaging over 1,000 community volunteers in collective impact work around 7 critical issues.

None of this happened in isolation however; the collaborative and creative spirit of our partners, the support of our dynamic board of directors, and the generosity of our volunteers and donors all helped us answer the call effectively with compassion for those we served. We are so grateful for each and every one of you!

A handwritten signature in black ink that reads "Janet Dankert". The signature is written in a cursive style with a large, looping initial 'J'.

Community Impact

Community Partnership of the Ozarks, Inc. is an independent 501(c)(3) organization that depends on both grant and donor dollars to fund the critical services we provide.

More than 92% of our total funds are from grants and contracts; therefore, the use of these dollars is restricted to specific programs and projects. Our unrestricted funds support general operations as well as the O'Reilly Center for Hope, Prosper Springfield, Community Collaboratives and Equity, Diversity & Inclusion Initiatives. They also allow us to respond to emerging community issues in a timely manner.

In the last year we...



Served or Impacted 62,595 People



Leveraged \$9,955,686 for our Community



Recruited 4,715 Volunteers



Received 25,079 Volunteer Hours

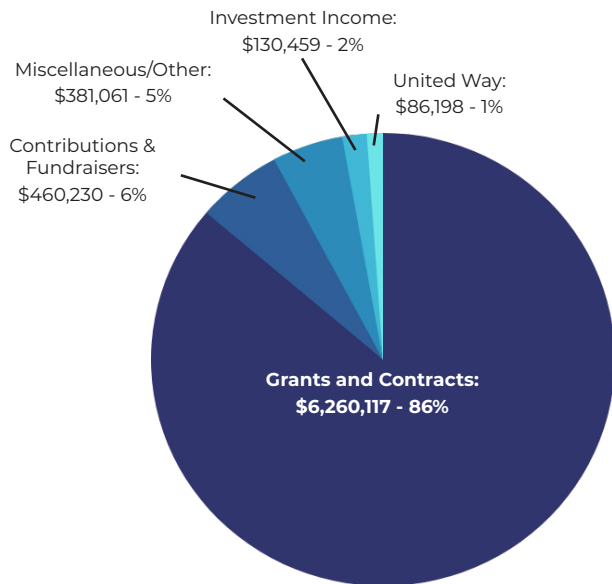


“We need you to help us make a difference in our community! Whether you donate, advocate or volunteer, your support is vital to helping build resilient children, healthy families, and strong neighborhoods & communities. One of the easiest ways to donate to Community Partnership of the Ozarks is through a financial contribution. Did you know for every Caring Communities state dollar received, we leverage another \$16.07? That’s a 1,607% return on your investment!”

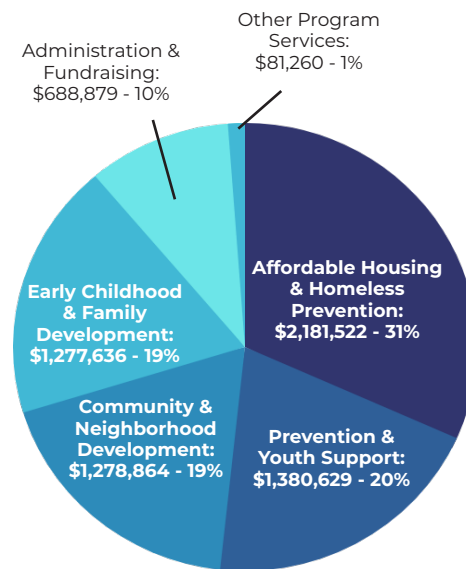


Janet Dankert
President/CEO

Revenues:



Expenses:



Community Partnership of the Ozarks is the Priority Partner of United Way of the Ozarks.



Go to
www.cpozarks.org/donate-now
to make a contribution today!

Early Childhood and Family Development

We are here for children and families in our community by providing services focused on school readiness, positive early childhood development, and quality child care for preschoolers.



Educare

Our Educare team recognizes that quality early care and education is essential to children's growth and development. We provide support to child care providers across a 5-county area, working to promote school readiness by establishing linkages in policy, program and practice that will ensure all children receive a solid foundation for success in school and in life.

- **Provided support to 60 childcare providers**
- **Impacted 500 children**
- **Supported 11 new child care providers becoming licensed - increasing access to child care for families in our region**

Steps to Excellence

1,421 educators

received

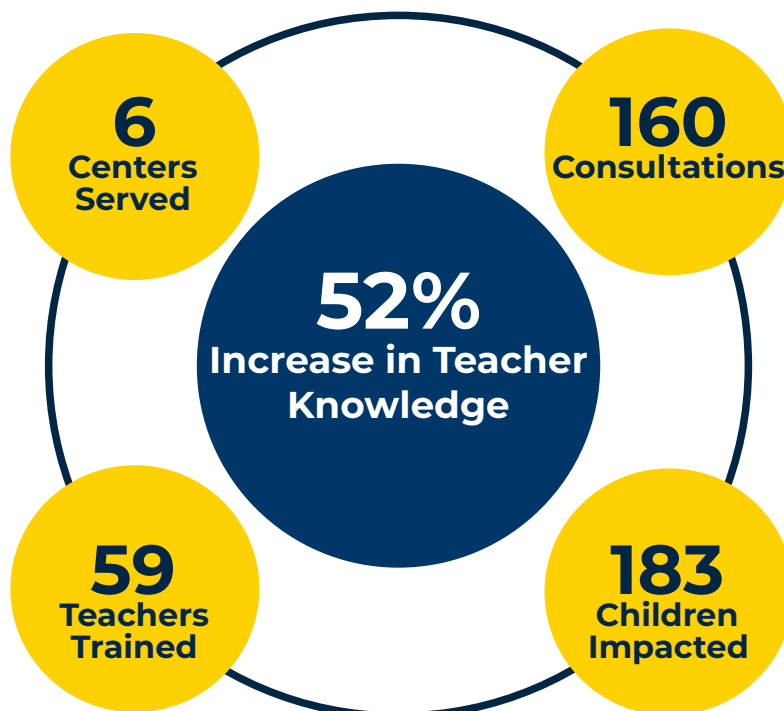
41,919.5 hours

of brain-based, trauma informed Conscious Discipline training.

With funding from the Darr Family Foundation, we were able to offer a range of training opportunities in our community. From large community trainings to small book studies, we made a widespread impact on early childhood educators through Steps to Excellence.

Infant Toddler Support Network

Our Infant Toddler Specialist Network (ITSN) is a free program that provides support, training and coaching to license-exempt and licensed childcare programs serving children ages birth to 36 months. The goal of the ITSN program is to help increase the quality of infant and toddler care for the centers that we work with. Averages on the Infant Toddler Environment Rating Scale are used to monitor increasing quality improvement from 1.0 to 7.0 on a likert-type scale.



Triple P - Positive Parenting Program

Triple P is a parenting program that helps parents manage big and small problems of family life. Triple P seminars can be adapted to fit the needs of any family helping to support parents and caregivers in our community. We offered **19** virtual Triple P Seminars that trained **245** people helping them become better parents.

Capable Kids and Families

Capable Kids and Families (CKF) strives to fill the gap in services for children with special needs and their families. We work to empower parents and families while focusing on children's potential for development.

- **51 Families Served**
- **300 developmental items available to families in the CKF Lending Library**

Parent Cafés

Our Parent Cafés utilize parent facilitators who lead peer-to-peer learning. They work to strengthen families from the inside out.

- **28 Parent Cafés offered engaging 242 people**
- **Over 7 years we have offered 318 Parent Cafés with over 3,000 people involved**



Child care is essential, and at Community Partnership of the Ozarks, we're working every day to make sure that our child care providers are prepared and ready to care for your kids.



Affordable Housing and Homeless Prevention

Our Affordable Housing and Homeless Prevention Division works to ensure safe, decent and affordable housing for everyone. We convene partners and resources to reduce barriers and increase financial stability in our community.

4,880
Guests
Served

O'Reilly Center for Hope

The O'Reilly Center for Hope opened in September, 2020. Since that time, **4,880** unduplicated guests were served by **8** on-site partners.

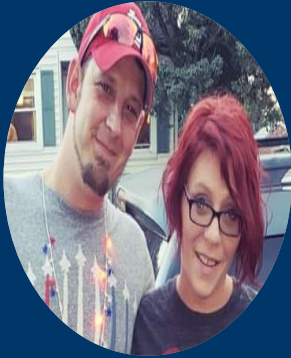
1,707
Assessments
Completed

One Door

One Door provides a central intake system for housing and shelter services. Over the last year, One Door completed **1,707** universal intake assessments and made **407** referrals to supportive housing programs.

”

“We feel like we found the holy grail. There is no judgment... they will help you. It has changed our lives. Do not be afraid to walk through these doors.”



Tyler and Chalice on services they received through One Door and the O'Reilly Center for Hope

138
Families
Housed

CARES Act Shelter Division

Our CARES Act Shelter Diversion team provides assistance to help people secure housing. Our team served **138** households and has **74** families currently placed in permanent housing.

1,300
People
Sheltered

Merciful Nights

We provided emergency hotel sheltering for COVID vulnerable individuals. More than **660** households consisting of over **1,300** people have been provided hotel sheltering throughout the COVID-19 pandemic, literally saving lives and reducing the spread of the virus within this already vulnerable community.

O'Reilly Center for Hope

Thanks to substantial contributions from the O'Reilly family, the City of Springfield and gifts from other donors, we purchased and renovated the Pepperdine Elementary School into the O'Reilly Center for Hope. We opened the Center in September 2020 and provide a wide range of services on site including those focused on:

- *Financial Literacy*
- *Housing Stability*
- *Legal Aid*
- *Physical and Mental Health Directed Services*

Having partners co-located at the O'Reilly Center for Hope reduces barriers and streamlines access to critical services. This allows our guests to more easily access services and our partners to provide a holistic and comprehensive response.





Ozarks Alliance to End Homelessness

Our Ozarks Alliance to End Homelessness (OAEH) serves as our community's regional planning body for coordinating homeless services and funding. We work on a community-wide level with agencies, advocates and individuals to ensure that homelessness is rare, brief and non-recurring in Christian, Greene and Webster Counties.

5,907

bed nights during cold weather

Crisis Cold Weather Shelters open during winter months to provide life-saving overnight shelter for those that would otherwise be sleeping outside. During the 2020-2021 cold weather season, shelters were open 74 nights, providing 5,907 bed nights. An average of 80 people were served per night with approximately 370 unique individuals served.

1,637

people served

From October 1, 2019 to September 30 2020 (the most recent data that is available), the homeless service system served 1,637 people. 67% of those were experiencing homelessness for the first time.

Community and Neighborhood Development

Our Community and Neighborhood Development Division provides a wide range of services to improve the social, economic, physical, and environmental well-being of our neighborhoods and our community.



”

“I came upon difficult financial circumstances in March 2021. I reached out to Community Partnership for help. Tiffany and CPO staff took me under their wings and through their efforts and perseverance all of my issues and problems were resolved. My sincere thanks to everyone at Community Partnership of the Ozarks.”

- David on our Community Based Social Work Services

Neighborhood Clean Ups and Tool Library



Tool Library

Our Tool Library offers a wide variety of tools available for check out by members. We have power tools, pressure washers, carpentry and plumbing tools, gardening equipment and much more! This program provides people with the tools for any home repair that needs to be completed. In the last year we had **104** active members and completed **683** transactions!

Clean-Ups

We facilitate neighborhood clean-ups for city recognized neighborhood associations in Springfield so that residents can dispose of yard waste, old furniture, construction debris and much more, free of charge. Last year we removed **253** tons of waste! We had **375** volunteers give **1,483** hours of their time!

Caring Communities

Our Caring Communities Initiative focuses on mentoring and youth development. We also provide crisis intervention, support and case management to families in need as well as support to neighborhood groups and organizations.



Bulldog Basketball Academy

The Bulldog Basketball Academy was created in partnership with Springfield Public Schools to create opportunities for kids in the Central High School feeder pattern to participate in a free basketball training program. The youth learn basketball skills as well as life skills such as having a positive attitude, working hard, the importance of school, and developing social skills. The Bulldog Basketball Academy was held at four different locations and had **78** students participate last year.

Bears, Badges & Kids

The Bears, Badges & Kids program was created by Coach Dana Ford in partnership with CPO and the Springfield Police Department as a response to the growing need to build positive community and police relations after the death of George Floyd. The goal is to bring kids and local law enforcement together through basketball to build positive relationships. A total of **6** events were held with **162** kids participating and **23** volunteers giving **218** hours of their time.

Community Social Work

Our Community Social Work team receives referrals from a wide range of partners to provide crisis intervention, support and case management to families in need. Our team made **1,715** contacts from **974** referrals, serving **654** individuals from **228** families, and provided **14** clients with ongoing case management services.

Community Collaboratives

We have **7** Community Collaboratives at CPO. These are groups of community stakeholders all working together to make lasting change in our community through collective impact. Over the last year, we had **1,055** volunteers engaged in the Community Collaborative Initiative.



Volunteer Income Tax Assistance Program

Our Volunteer Income Tax Assistance (VITA) program offers free tax help to people in our community. We utilize IRS-certified volunteers to provide free basic income tax return preparation.

 **\$4,700,000**
in refunds

We had 56 volunteers prepare a total of 4,808 federal returns for over \$4.7 million in refunds.

 **\$74,052**
in refunds in one day

Our VITA team participated in Day of Hope and helped individuals experiencing homelessness claim their economic impact payments. We completed 48 returns with federal refunds and stimulus in one day that totaled \$74,052.

Prevention and Youth Support

Our Prevention and Youth Support Division coordinates and supports mental health promotion, suicide prevention, and substance use and misuse prevention efforts across 21 counties in southern Missouri.



”

“I was able to use the skills learned in my trainings to ask a friend if they were thinking of suicide. I was able to gauge the situation and have a frank conversation about mental health, which isn’t typical of our friendship. She has since gotten on a better track, drinking less and reaching out because I have opened a window within our friend group that is understanding of the few that have had suicidal feelings due in part to isolation during COVID.”

- Mental Health First Aider

Medication and Vape Disposal



Vape Disposal Boxes

In early 2021 vape disposal boxes were installed in all **14** middle and high schools in the Springfield Public School District. These disposal boxes allow students, staff, and community members to dispose of unwanted vaping devices. From January-May 2021, there have been **36** devices collected. Of the devices that have been collected, **86%** of those were collected from the high schools.



Medication Safety

We work to provide safe ways to store medications and dispose of them when they are unwanted or expired. Our Prevention Resource Center provided **254** Lock Boxes and **1,105** medication disposal pouches throughout our service area. Regional DEA Take Back Days and permanent disposal boxes collected over **7,600** pounds of medication.

Training in a Virtual World

Throughout the last year, many trainings, meetings, and events adapted to occur virtually instead of in-person. We continued offering vaping prevention education in schools that reached over **7,000** students. We implemented substance use prevention media campaigns that reached over **2,000,000** people. We also provided opioid prevention education for over **1,200** youth and community members and a wide range of other substance use prevention education opportunities, which resulted in **31** presentations for **1,260** participants.

Mental Health First Aid

Mental Health First Aid Instructors began facilitating trainings virtually over the last year reaching a wide range of community members. Trained First Aiders referred over 3,000 people to a mental health professional, self-help or other support services.



32 First Aid Trainings Held



460 Community Members Trained



1,798 Youth Referred to Services



1,319 Adults Referred to Services

In 2018, 18.2% of Greene County 6th-12th graders seriously considered suicide. This number dropped in 2020 to 14.7%. While one youth is too many, there is a glimmer of hope in a decrease in the number of our youth seriously considering suicide.

Signs of Suicide

Our Prevention and Youth Support Division provides a variety of suicide prevention programming for schools and community members, including the Signs of Suicide (SOS) program. SOS is a classroom-based educational program that teaches students to recognize the warning signs of suicide in their peers and how to help them through that crisis. Evaluation of SOS indicates a decrease in youth suicide attempts by up to **44%**. We have trained **38** school districts in how to implement Signs of Suicide, including **15** counselors at Springfield Public Schools. Over the last year, approximately **5,000** Springfield Public Schools 7th and 9th grade students participated in the program.

Firearm Suicide Prevention

Suicide is the **10th** leading cause of death in Missouri and the **2nd** leading cause of death among Missouri youth ages 10-18. Additionally, **57%** of suicides in Missouri involve a firearm, which is the most lethal means of suicide. **85%** of suicide attempts involving a firearm are fatal. With the hope of decreasing the prevalence of suicide by firearm, CPO was awarded a 2-year Firearm Suicide Prevention Planning grant in February 2021 from the Missouri Foundation for Health. The goals of this project are to create comprehensive, evidence-based firearm suicide prevention strategic plans across a 5-county area, while building community support to implement those plans. This program will work in Greene, Christian, Taney, Newton and Howell counties.

Our Generous Donors

We are grateful for all of our supporters. Your donations and support enables us to work toward our mission and build a community that we all want to live in.

\$50,000+

Charlie & Mary Beth O'Reilly ^{OCH}
O'Reilly Family Foundation ^{OCH}

\$25,000 - \$35,000

Buddy Ball & Virginia Jones ^{OCH}
Dr. Gary Wright
Great Southern Bank ^{OCH}
Mercy ^{MN}

\$10,000 - \$24,999

Anonymous
Charlie & Mary Beth O'Reilly
Family Foundation ^{PS, OCH}
Larry Stock & Angela Myers
Leslie Peck ^{OCH}
Neale & Newman, LLC ^{OCH}
Oakstar Bank ^{OCH, MSOM}
O'Reilly Auto Parts Charity
Golf Classic
Wesley United Methodist
Church ^{OD}

\$5,000-\$9,999

Agri-Gro Marketing, Inc.
Arvest Bank ^{MSOM}
Burrell Behavioral Health
Central Bank of The
Ozarks ^{OCH}
Doe's Eat Place
John Ricketts
Larry P. O'Reilly Family
Foundation
Price Cutter Charity
Championship
The Thomas H. & Josephine
Baird Memorial Fund
Patricia & Thomas Brewer ^{MN}
Robert Krill ^{MN}
Simmons Bank ^{PS, MSOM}
SRC Holdings Corporation

Tal & Rosalie O'Reilly Wooten
Family Foundation
US Bank ^{MSOM}

\$1,000 - \$4,999

Air Services Heating, Cooling &
Plumbing
BancorpSouth ^{MSOM}
Barbara Lucks ^{OCH}
Becky Morgan ^{OCH}
BluCurrent Credit
Union ^{MSOM}
Breakfast Optimist Club of
Springfield
Brent Bolyard ^{MN}
Christ Episcopal Church ^{OCH}
Christopher & Angela Stout
Darlene Haun
David Cook
Drs. Robert & Ann Egbert ^{MN}
Ellen Placzek
Eric Peterson
Frances Bixler ^{MN}
Francine Pratt
Gregory Peterson
GFWC Sorosis Club of
Springfield
Gathering Friends for the
Homeless ^{OD}
Greg Burris
Guaranty Bank
Harold & Darlene Bengsch
Heavy Construction Laborers
Local Union # 663
Janet & Herb Dankert
Dr. Janice Duncan
Jordan Valley Community
Health Center
Jack & Judy Hadsall Charitable
Foundation
LGB Financial Services ^{OD}
Loren Bodendieck ^{OD}

Lynn & Karen Thompson
Mid-Missouri Bank ^{MSOM}
Millhart BBQ
National Avenue Christian
Church ^{OD}
Nixa First Assembly of
God ^{OD}
Pat Zachary
Pitt Technology Group
Charitable Fund
Ridgecrest Baptist
Church ^{OD}
Sam & June Hamra Family
Foundation
Senior Democrats of the
Ozarks ^{MN}
Shelley Evans
Springfield First Community
Bank ^{MSOM}
St. James Episcopal Church ^{OD}
Stamina Products
The La Boda Fund ^{OCH}
Trotter Family Foundation
United Way of SWMO
Venues Church ^{OD}
Walgreens
Whosoever MV, Inc.
Zion Evangelical Lutheran
Church ^{OD}

\$500 - \$999

Anthem
Brentwood Christian Church
Brian Fogle
City of Springfield
Environmental Services
Connie Harmon
Danny Edwards
Elizabeth & Robert Kick
Georgina Manahan
Hogan Land Title
Jeffrey Keithline

Our Generous Donors

\$500 - \$999 Continued

Jerry Grant
 Joyce Ward
 Juanitha Henkel Foster ^{MN}
 Keith & Kim Chaffin
 Kent & Tarah Greve
 KPM Technology, LLC
 KYTV-TV
 Lisa & Terry Langley ^{MN}
 Lolita Albers
 Macadoodles North
 Mother's Brewery
 Nancy & James Hays ^{MN}
 Nixa Church of the Nazarene ^{OD}
 Norm & Mary Knowlton
 O'Reilly Auto Parts
 Peck's Insurance and Financial Services
 Professional Answering Services
 Queen City Soul Kitchen
 Robert Dieckhoff
 Sac River Cowboy Church ^{OD}
 Sanford, Lea & Associates
 Sovereign Grace Baptist Church ^{OD}
 Spot Plus
 Susan Parrish ^{MN}
 Suzanne Powers
 The Bank of Missouri
 The Whitlock Company'
 United Way of the Ozarks
 University Properties
 Wood and Huston Bank

\$250 - \$499

Arnold & Betty Greve
 Brad Erwin
 Carl Rosenkranz
 Dana & Ann Elwell
 David Stanfield
 Dr. Alastair & Melissa Haddow
 First Baptist Church ^{OD}
 Hannah King
 Haun Family Fund
 Jack & Carolyn Hembree ^{MN}
 Jacob Arnold
 Jaimie Trussell
 Janice Van Camp
 Jason Gage
 Jeanne Toombs
 Joan Menchetti
 Joselyn Baldner

Judy Adams ^{MN}
 Kathryn Charles
 Katrin Herd
 Lois Zerrer
 Melissa Moore
 Northside Christian Church ^{OD}
 Patricia Deck
 Patricia Walker
 Paul & Charity Elmer
 Queen City Shout
 Raeanne Presley
 Ross Bebout
 Roy & Judith Duncan ^{MN}
 Sharon Ellard
 Sheri & Allen Lupton
 Sullivan Bank ^{MSOM}
 Susan Gettys
 Susan Prine
 Terry Wayne Sanders
 The Carpet Shoppe
 Todd Euglow

\$100 - \$249

Adam & Cheryl Bodendieck
 Alfred Powell
 Alice Morrow
 Andy Dalton
 Anne & Scott Mason
 Arnold & Abbey Jansen
 Ashleigh Rogers
 Ashley Krug
 Barry Rowell
 Beth Polivka
 Betsy Bradshaw-Burris
 Billie Thurman ^{MN}
 Bob & Cynthia Bennett
 Bobby Merideth
 Brad Auge
 Bradley Gatten
 Brian & Keli McDonough
 Brooke & Gabriel Ash
 C.J. Hankins
 Charla Price
 Charlotte Hardin
 Christina Ford
 Clif & Gail Smart
 Cora & Jeff Scott
 Cynthia Lea
 Dan Ferguson
 Dan Schepers
 David Fay
 David McQueary
 David & Shirley Hutchison ^{MN}

Debra Jones
 Derrick Estell
 Devin Dankert
 Diane Reidle
 Dianna Williams
 Dierks Family Fund
 Don Tribby
 Don Simpson
 Donna Irish
 Douglas McNeal
 Dusty Bob's, LLC
 Elizabeth Lisenby ^{MN}
 Gillespie Excavating
 Gina & Ray Burroughs
 Grant Seifried
 Greg Melhorn
 Heather Kennedy
 Herschel Keithline
 Hue Ping Chin & Peter Meidlinger
 Jacque Harness-Breedlove
 James Owens ^{MN}
 James & Barbara Towery
 Jane Earnhart
 Jean Knapp
 Jerry Keithline
 Jerry & Sondra Long
 Jim & Christine Rice
 Joan Atkisson
 Joe Loeber
 John Wyrsh
 John & Elizabeth Raidel
 Joy Draeger
 Joyce Livingston-Schearf
 Joyce & William Clark
 Katie Towns
 Kevin Holt
 Kyle Moats
 Linda Regan
 Linda Crim
 Linda & Don Neel
 Lynda Moore
 M Josephine Gardner
 Margaret Castrey
 Mark McQueary
 Mark & Sara Owen ^{MN}
 Martha Fay
 Mary Hodge ^{MN}
 Mary Lu & John Wheeler
 Matt Morrow
 Matthew Price
 Melinda Grant
 Melinda Vacey

Our Generous Donors

\$100 - \$249 Continued

Michael Dillon
 Michael & Barbara Gentry
 Michelle Tyler
 Mike & Nancy White
 Mildred Hall
 Nixa Church of Nazarene ^{OD}
 Pauline Marsh ^{OD}
 Patrick & Jeanne Roberts
 Paragon Architecture, LLC
 Patricia & Larry McGregor
 Paul Potthoff
 Paul & Regina Williams
 Quail Creek Skilled Nursing, LLC
 Rebecca Sisk
 Rob Baird
 Robert Johnson
 Robert & Linda Thieman
 Ron Showers
 Ruscell Pavlin
 Susan Pyle
 Sarah & David Muegge
 Scott Meier
 Shannon Jacob
 Sherri Simpson
 Sherry & Charles Buchanan ^{MN}
 Sony Hocklander
 South Street Christian Church of Springfield ^{OD}
 Stephen Hall
 Steve Atwood
 Susan Morton
 Susan & Irwin Cohen
 Susan & Kris Nau
 Tamera Jahnke
 Teresa Waters
 Teresa Morlang
 Tim Devine
 Tony Bartholomew
 Trinity Presbyterian Church PC ^{MN}
 Vern Morgan
 Vreni Jones
 Ward Branch Enterprises, LTD
 William (B.J.) Roberts
 William Hennessey
 William & Ester Bultas
 Zach Troutman
 Zachary Bodendieck

Less Than \$100

417 Professional - Community Titans
 417 Professional - Power Connect Alliance
 Addie Ferber
 Alan Ware
 Allen Criger
 Allison Robertson
 Alva Agee
 Alysia Burke
 Amanda Coleman
 Amanda Stadler
 Amber Hoffman Hucke
 Amy Blansit
 Andrew Nissen
 Anita Young
 Anna Jones
 Arianna Beckham
 Armando Johnson
 Arnold Echo-Celani
 Ashley Corsolini
 Bailey Cook
 Barbara Phillips ^{MN}
 Barrie Talbot
 Becky Hosp
 Bernita Cauthon
 Betty Dickensheet
 Bill & Robin Squires
 Bob Swanson
 Bob Clinkenbeard
 Bonnie Keller
 Bradley Margolin
 Brandon Rachal
 Brandy Harris
 Brenda Latimer
 Bridget Dierks
 Bryan & Tracy Deck
 Cale Ambuehl
 Calie Holden
 Carolyn Holdren
 Carrie Richardson
 Cassandra Herrman
 Catherine McKinney
 Chuck Dow
 Charrie Dixon
 Chris & Jayne Davis
 Christopher Drew
 Christy Davis
 Cindi Stafford Lockhart
 Clay Smith

Clayton Keiser
 Clement Acheamong
 Connell Insurance, Inc.
 Cristie & Dane Seiler
 Cynthia Bradley
 Dan Scott
 Dan Lohse
 Dana & Dan Carroll
 Danavee Long
 Darrell & Stacy Darnell
 David Cooper
 David Pennington
 David & Christina Greer
 Dawn Elliott
 Deanna Cantrell
 Deborah Safron
 Deborah Holden
 Debra Miller
 Denise Lock
 Denise Johnson
 Devin Dourisseau
 Diane Leamy
 Don Agee
 Donald & Janet Brown
 Doug Schlottman
 Douglas Acklin
 Dr. Shannon Cuff
 Dustin O'Neal
 Eleanor Mills
 Elisha Lines
 Ellen Hill
 Emilee Blansit
 Emily Smith
 Eric Hillgren
 Eric Eichenberger
 Frank Miller
 Frederick James
 George Winston
 Gloria High
 Hallie Nissen
 Hamar Hann
 Heather Huckstep
 Howard Wolf
 Jaime Reese
 James Cook
 James Logan
 Jan Robbins
 Jane Collins
 Jane Alcorn

Our Generous Donors

Less Than \$100

Continued

Janice Smith
Jason Grant
Jean Kalapathy
Jeff Waters
Jen Hanson
Jenna & Jason Chierek
Jennifer Orozco
Jennifer Pyck
Jennifer Sickinger
Jennifer Thompson
Jennifer Wiehe
Jennifer Znosko
Jenniffer Rule
Jenny Clemensen
Jessica Morton
Jill Reynolds
Jillian Latimer
Jim Hoovens
Jim Arnott
Jodie Greer
Joe Dineen
John Goodwin
John Mihalevich
John Davis
John Kennedy
Johnny McNeil
Josh Fail
Joshua Best
Judy Cross
Julie Gray
Julie Masterson
Julie Brown
Julie Posey
Justin Milam
Justin & Whitney Lockhart
Kailee Leverenz
Karen Greer
Karen Smith
Karen Evans
Katharine Hoffman
Kathi, Mike & Taylor Davis
Kathleen O'Dell
Katie Weathermon
Kaylea Espinoza
Kendall Slaughter
Kendall & Candida Deckard
Kerri Cox
Kevin Davis
Kim Diehls

Kristen Davis
Kristina Mcteer
Kristy Elder
L Adams
Lari Jump
Larry & Donna Tarr ^{MN}
Launa Boatman
Lauren Laughlin
Lauren Rogers
Leaster Gibson
LeeAnn Camey
Leigh Burdick
Leila DeMayo
Lenord McGownd
Linda Stainback
Lindsay & Cameron Tobin
Lisa Nene
Lisa Melgren
Lisa Crawford
Lisa Farmer
Lisa Bakerink
Loretta & Daniel Ponder
Lori & Scott Margolin
Luke Wegenka
Lyle Foster
Mackenzie Hernandez
Magdalyn Ames
Mandy Vela
Martha Huff
Martin Sansom
Mary Nottingham
Mary Ackland
Mary Jansen
Mary Ann Jennings
Mary Lou Bridges
Matt Simpson
May Ann & David Donelson
Mia Joe
Michael Stevens
Michelle Garand
Michelle Rose
Mike Tilley
Mike Brooks
Nancy Gose
Nancy Panin
Nathan & Kateryna Thieman
Pamela Girardot
Patty & Murray Hanson
Paul Brady
Paula Dougherty
Paula Pyck

Penelope Nickle
Price Cutter
Rachel Statler
Rachel Tripp
Ramon Blakley
Raymond Worley
Rebecca Hoy
Renee Elliott
Rexanna Hanger
Richard Bishop
Richard Woods
Rick Kennedy
Rick Fay
Rikki Barton
Roberta Stewart ^{OD}
Robin Grant
Ronald Burke
Rusty MacLachlan
Ryan & Melissa Jansen
Sabbath Grimes
Sally Baird
Sam McCall
Samantha Sherman
Sara Johnson
Sarah & Doug Deck
Sarah Pace
Sarah Hollander
Shannon Medley
Sheila Glenn-Whitford
Shelby Butler
Solomon Balenton
Spencer Ernst
Stacey Funderburk
Stephanie Darby
Steve Cardenas
Stormy Bultas
Stuart Edwards
Susan Robertson
Susan Griesemer
Susan & Wesley Nissen
Susie & Will McCrimmons
Terry Grier
Thomas Peck
Thomas Weeden
Tiffany Moore
Tiffany Goade
Tom Rankin
Tori Alcorn
Viviana Writer
Wijahat Riyaz



**COMMUNITY
PARTNERSHIP**

Working Together to Build Strong Communities

Our Mission:

To facilitate and promote the building of resilient children, healthy families, and strong neighborhoods & communities through collaboration, programming, and resource development.

330 N Jefferson
Springfield, Missouri
65804

Phone: 417-888-2020
Email: info@cpozarks.org
www.cpozarks.org

Community Partnership of the Ozarks is the
Priority Partner of United Way of the Ozarks.

