



**COMMUNITY
PARTNERSHIP**

Working Together to Build Strong Communities

2022 ANNUAL REPORT

THE RIPPLE EFFECT

BOARD OF DIRECTORS

Sam Atkinson

Practice Manager III
Mercy

Jim Arnott

Sheriff
Greene County Sheriff's
Office

Rob Baird

CEO & Chairman of the
Board
Phenix Marble

Joselyn Baldner

(Board President)
President & CEO
Central Bank of the Ozarks

Greg Burris

President & CEO
United Way of the Ozarks

David Cook

Vice Chairman of Southwest
Missouri
The Bank of Missouri

Lisa Crawford

31st Circuit Manager
Greene County Children's
Division

Allen Criger

Coordinator of Operations
Greene County Juvenile
Office

Dr. Shannon Cuff

Associate Provost of Adult,
Online, and Graduate
Education; Associate
Professor of Education
Drury University

Bridget Dierks

Vice President of Programs
Community Foundation of
the Ozarks

Dr. Janice Duncan

Community Volunteer

Brad Erwin

(Board Secretary)
President
Paragon Architecture

Shelley Evans

(Board Treasurer)
SVP, Commercial Banking
Officer
Guaranty Bank

Jason Gage

City Manager
City of Springfield

Dr. Bud Greve

Community Volunteer

Judy Hadsall

CEO/President
Multipli Credit Union

Wyatt Jenkins

Director
FORVIS

Dee King

Chief of Staff
Burrell Behavioral Health

Ashley Krug

Market Development
Coordinator
City of Springfield

Dr. Grenita Lathan

Superintendent
Springfield Public Schools

Barbara Lucks

Organizational Consultant

Rusty MacLachlan

Greene County
Commissioner

Anne Sallee Mason

Attorney
Neale & Newman Law Firm

Brian McDonough

(Board Vice-President)
Vice President & General
Manager
KY3, KSPR, & the Ozarks CW

Scott Meier

National Sales
Representative
Midwest Family
Broadcasting

Matt Morrow

President & CEO
Springfield Area Chamber of
Commerce

Charlie O'Reilly

Vice Chairman of the Board
O'Reilly Auto Parts

Leslie Peck

President
Peck's Insurance and
Financial Services

David Pennington

Fire Chief
Springfield Fire Department

Beth Polivka

VP, System Chief Nursing
Officer, Administration
CoxHealth

BJ Roberts

Vice President Finance
Mercy Health - Springfield
Communities

Carl Rosenkranz

Executive Director
OACAC

Grant Seifried

Director of Sales and
Marketing
Springfield
Remanufacturing
Corporation

Brandon Taylor

Program Manager of IT &
Security
Dragos Inc.

Rashod Taylor

Agency Manager
Country Financial

Katie Towns

Director
Springfield-Greene County
Health Department

Jaimie Trussell

CEO
Council of Churches of the
Ozarks

Paul Williams

Chief of Police
Springfield Police
Department



CONTENTS

Board of Directors	1
Message from President/CEO & Board President	3-4
Community Impact	5
Financial Information	6
Early Childhood and Family Development	7-12
Prevention & Youth Support	13-18
Affordable Housing & Homeless Prevention	19-24
Community & Neighborhood Development	25-30
Our Generous Donors	31-36

MESSAGE FROM OUR PRESIDENT/CEO

**I ALONE CANNOT CHANGE THE WORLD, BUT I CAN CAST A
STONE ACROSS THE WATERS TO CREATE MANY RIPPLES.**

- MOTHER TERESA



Mother Teresa has always been one of my heroes. What a brilliant, kind, and compassionate person. I love this quote because it speaks to not just individual action and the impact one person can have, but to collaboration as well. When I think of our community and CPO, I think of the ways we ALL create ripples every day that change the world for so many.

Although most meetings continued virtually, our Community Collaboratives Initiative had 138 members that worked on issues of child abuse and neglect, housing, food, transportation, early childhood and education, and the environment. The Ozarks Alliance to End Homelessness engaged 190 partner agencies and 199 volunteers who worked together to serve some of the most vulnerable in our community. A prime example was the Crisis Cold Weather Shelter Program, which was open 62 nights providing 9,305 bed nights last winter. This program was offered through the generous support of 9 different churches and faith-based partners who shared their spaces to provide life-saving services for those without homes or a place to go.

The ripple effects continued in our work with Springfield Public Schools as we

partnered to launch the School-Based Social Work program, a vision of our community for more than 15 years, and as we supported expansion of the SAAB: Brother 2 Brother program in all 5 high schools and a city-wide council for chapter leadership. Regional collaboration was also strong as we received a Missouri Foundation for Health planning grant for Firearm Suicide Prevention in Greene, Christian, Howell, and Taney Counties, and focused efforts on opioid misuse prevention through community education and drug take back events.

Our Young Professional Advisory Council (YPAC) created quite the ripple as they recruited 15 new members and hosted their first Trivia Night Fundraiser for CPO, exceeding their fundraising goal and creating a pipeline for young professionals to join the CPO Board of Directors!

I am so proud of the way we come together to create ripples that change lives, and that only happens through the commitment of our exceptional staff, board, and volunteers. I am grateful to all who help us meet our mission and create the community we all want to live in!

MESSAGE FROM OUR BOARD PRESIDENT

OUR COMMUNITY NEEDS CPO, BUT WE NEED ALL OF YOU TOO.
- JOSELYN BALDNER, BOARD PRESIDENT



Community Partnership of the Ozarks (CPO) is such a critical, integral part of the success of our community, so it is an honor and privilege to serve as the President of the Board of Directors for CPO.

Last year our incredible team of 85 served or impacted over 55,000 people, including families needing parenting support, youth in our Bulldog Basketball Academy and mentoring programs, individuals and families experiencing homelessness, and community partners going through our mental health first aid training. The team couldn't do what they do without the help of amazing volunteers that invest their time into CPO and our community. They recruited and worked with 6,716 volunteers that invested 30,270 hours of their time, which allowed us to have even more positive impacts; and through donations of time and resources, CPO leveraged an additional \$12.4 million to support our community!

CPO is a strong leader across the region and the state, and that leadership starts with our President/ CEO Janet Dankert – a person who works with our team every day to make our community a better place for everyone through collaboration, drive, and passion. The Leadership Team, staff, and board of CPO are also stellar, and we would not be the successful organization that we are without them.

Our community needs CPO, but we need all of you too. Community leaders, non-profit partners, businesses, volunteers, and donors are all vital to helping CPO meet our mission of building resilient children, healthy families, and strong neighborhoods & communities. Thank you for your support of CPO. We look forward to another great year of positive impacts that we all make together!

COMMUNITY IMPACT



IN THE LAST YEAR WE...



HAD 6,716 VOLUNTEERS DONATE 30,270 HOURS



LEVERAGED \$12,432,669 FOR OUR COMMUNITY

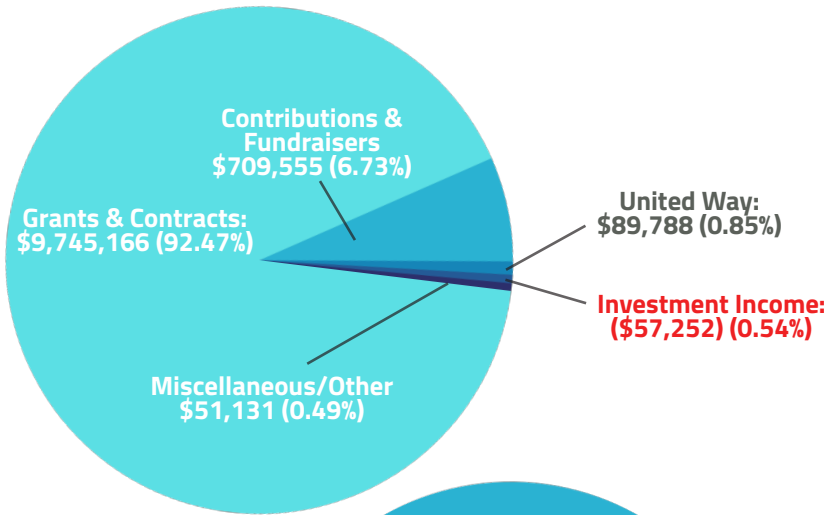


SERVED OR IMPACTED 55,268 PEOPLE

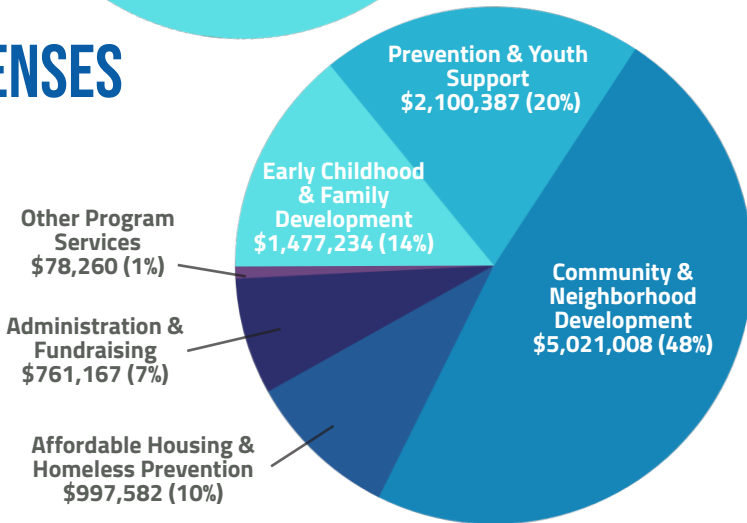
Community Partnership of the Ozarks, Inc. is an independent 501(c)(3) organization that depends on both grant and donor dollars to fund the critical services we provide.

FINANCIAL INFORMATION

REVENUES



EXPENSES



For every Caring Communities state dollar received, we leveraged another \$20.32. That's a 2,032% return on your investment!

Community Partnership of the Ozarks is the Priority Partner of United Way of the Ozarks.



EARLY CHILDHOOD & FAMILY DEVELOPMENT



Early childhood education has ripple effects throughout a child's life. We are here for children and families in our community by providing services focused on school readiness, positive early childhood development, family support, and quality child care for preschoolers.

"We cannot say enough about how amazing and beneficial this program has been for us. The program is dedicated to helping teachers/ caregivers gain knowledge, so that our kiddos are learning and exploring in a fun and safe environment. This program has helped our teachers grow and further develop their skills in the classroom."

**- Child Care
Center Director
on ITSN**

INFANT TODDLER SUPPORT NETWORK



Our Infant Toddler Support Network (ITSN) works to increase the quality of infant and toddler child care in our community.

WE SERVED
40
CLASSROOMS

IMPACTING
400
KIDS

Our ITSN program provides free support, training and coaching to license exempt and licensed child care programs serving children ages birth to 36 months. We provide on-site services including resources, individual consultations, targeted trainings, classroom mentoring, coaching, and feedback.

TRIPLE P

POSITIVE PARENTING PROGRAM

Triple P is a best practice parenting program that helps parents manage big and small problems of family life. The skills and knowledge received in the training have ripple effects for families that go beyond parenting.



MORE THAN
500
PARENTS SERVED

We worked with a father who was struggling to build a relationship with his stepchild. He said the skills he learned brought **"calm and peace to my home."**

A couple that we worked with was in tears when they initially spoke of their struggles with parenting three small children. As they returned each week, they said their parenting skills were increasing and their relationship was better. **"The kids listen, we are on the same page with our discipline and consequences, and we are enjoying our babies!"**

EDUCARE



WORKING TO SUPPORT CHILD CARE PROVIDERS TO GIVE KIDS A SOLID FOUNDATION FOR SUCCESS IN SCHOOL AND LIFE

Our team meets with child care providers to improve school readiness, promote developmentally appropriate activities, improve health and safety, and support appropriate interactions when dealing with behaviors.

681

VISITS TO CHILD CARE PROVIDERS ACROSS GREENE, CHRISTIAN, TANEY, WEBSTER AND POLK COUNTIES

60

CHILD CARE PROVIDERS WORKING WITH EDUCARE

700

CHILDREN AGE BIRTH TO FIVE WERE POSITIVELY IMPACTED FROM OUR SERVICES

CAPABLE KIDS AND FAMILIES

Capable Kids and Families strives to fill the gap in services for children with special needs and their families. We work to empower parents and families while focusing on children's potential for development.

*WE WORKED WITH **36 FAMILIES** AND CHECKED OUT OVER **300 DEVELOPMENTAL TOOLS** TO HELP CHILDREN REACH THEIR MILESTONES*

HOME VISITING

HOME VISITING SERVICES MATCH PARENTS WITH A TRAINED PROFESSIONAL WHO GUIDES THEM THROUGH THE EARLY STAGES OF THEIR CHILD'S DEVELOPMENT

FIRST BIRTHDAY

Our First Birthday program serves families who are in their 3rd trimester or have a child who is up to 6 months old that does not have a safe sleep option. Our home visitors serve 24 counties in Southwest Missouri and provide safe sleep education along with a pack-n-play for each family.

*WE PROVIDED A SAFE SLEEP OPTION FOR OVER **120 KIDS** LAST YEAR*

HEALTHY FAMILIES PROGRAM

The Healthy Families program works with families to provide resources, support and education in the parent's home. 70% of our Healthy Families referrals come from Children's Division for families involved with the child welfare system.

*WE SERVED **34 FAMILIES** BY PROVIDING REGULAR HOME VISITS AND ONE-ON-ONE SUPPORT*



HOME VISITING NETWORK

We launched the Home Visiting Network to increase collaboration among home visiting service providers. We also launched our Centralized Referral and Intake System (CRIS) to offer a central point for referrals. During monthly meetings, we have almost all of the home visiting programs in Greene County represented.

*WE HAVE RECEIVED OVER **250 REFERRALS** TO 6 PROGRAMS THAT ARE PARTICIPATING IN OUR CENTRALIZED REFERRAL AND INTAKE SYSTEM*

A photograph of three young women of diverse backgrounds laughing joyfully outdoors. One woman is in the foreground, another is behind her, and a third is to the right. They are all smiling and looking down or slightly away from the camera. The background is a bright, slightly overcast sky with some greenery visible. A large blue rectangular overlay covers the lower half of the image, containing the title and subtitle text.

PREVENTION AND YOUTH SUPPORT

We coordinate and support mental health awareness and suicide prevention, as well as substance use and misuse prevention efforts across 21 counties in Missouri

SPIRIT

SCHOOL-BASED PREVENTION INTERVENTION AND RESOURCES INITIATIVE

SPIRIT is a school-based prevention program designed to reduce youth substance use and promote resilience at any grade level. Our SPIRIT program has partnered with the Carthage School District for over 20 years providing support and education that has had ripple effects across the district and community.

**SPIRIT PROVIDED MORE THAN 1,250 HOURS OF
SUBSTANCE MISUSE PREVENTION EDUCATION**



**3,668
STUDENTS
EDUCATED**

OPIOID MISUSE PREVENTION

According to the 2022 Missouri Student Survey, 6th-12th grade students reported a decrease in all the counties in our region for past month use of prescription drugs not prescribed by a doctor.

In Greene County that decrease went from:

8.2% **>>>** **1.9%**
in 2020 in 2022

*THAT IS 1,707 FEWER TEENS MISUSING
PRESCRIPTION DRUGS IN GREENE COUNTY*



AWARENESS OF THE RISK OF HARM FROM OPIOID MISUSE

**REACHED OVER
1,000,000 PEOPLE**

Created and implemented media campaigns to increase awareness about the risk of harm from opioid misuse.



**39 GENERATION RX
TRAININGS**

Trained 813 people in Generation Rx that increased knowledge and awareness around opioid misuse.

**SINCE 2017,
9,469 YOUTH AND
ADULTS HAVE
BEEN TRAINED IN
GENERATION RX**

DECREASE THE AVAILABILITY OF OPIOIDS

**6,980 POUNDS OF MEDICATIONS
SAFELY DISPOSED**

Drug take back events collected 6,980 pounds of unwanted medications for safe disposal in our region.

**SINCE 2012, DRUG TAKE
BACK EVENTS HAVE
COLLECTED 86,186
POUNDS OF MEDICATIONS**

**43 PERMANENT DRUG
DROP BOXES**

There are 43 permanent drug drop boxes located in our region providing a fixed location for safe drug disposal.



VAPE PREVENTION

Our team worked with Coalitions and community groups to implement a variety of vape prevention efforts. The ripple effects of safe disposal and education can be seen in our work across the region.



**289 VAPE DEVICES
WERE COLLECTED IN
DISPOSAL BOXES**

**WE WORKED WITH THE TOBACCO & VAPE
PREVENTION COALITION TO INSTALL VAPE
DISPOSAL BOXES IN ALL 14 MIDDLE AND HIGH
SCHOOLS IN SPRINGFIELD PUBLIC SCHOOLS**



We collaborated with the Tobacco & Vape Prevention Coalition to provide the Springfield Area Vape Education program to more than 600 students. This education resulted in:

82%

***OF MIDDLE AND HIGH SCHOOL STUDENTS REPORTING
THEY WERE **VERY UNLIKELY TO VAPE** FOLLOWING
THE PROGRAM***

AFFORDABLE HOUSING AND HOMELESS PREVENTION

O'REILLY CENTER FOR HOPE

Our Affordable Housing and Homeless Prevention Division works to ensure safe, decent and affordable housing for everyone. We convene partners and resources to reduce barriers and increase financial stability in our community.

ONE DOOR

When facing a housing crisis, understanding and navigating the systems of services can be confusing and overwhelming. One Door assists in maneuvering through those crucial systems by providing a central point of entry for coordinated intake, assessment, and referrals for housing and shelter services in our community.



1,219

INTAKES WERE COMPLETED
ENCOMPASSING

2,347

PEOPLE
THAT CREATED A TOTAL OF

497

REFERRALS TO SUPPORTIVE
HOUSING SERVICES

O'REILLY CENTER FOR HOPE

The O'Reilly Center for Hope opened in 2020 and serves as a community hub that brings together multiple partner agencies in support of affordable housing, financial stability, and the overall well-being of people in our community.

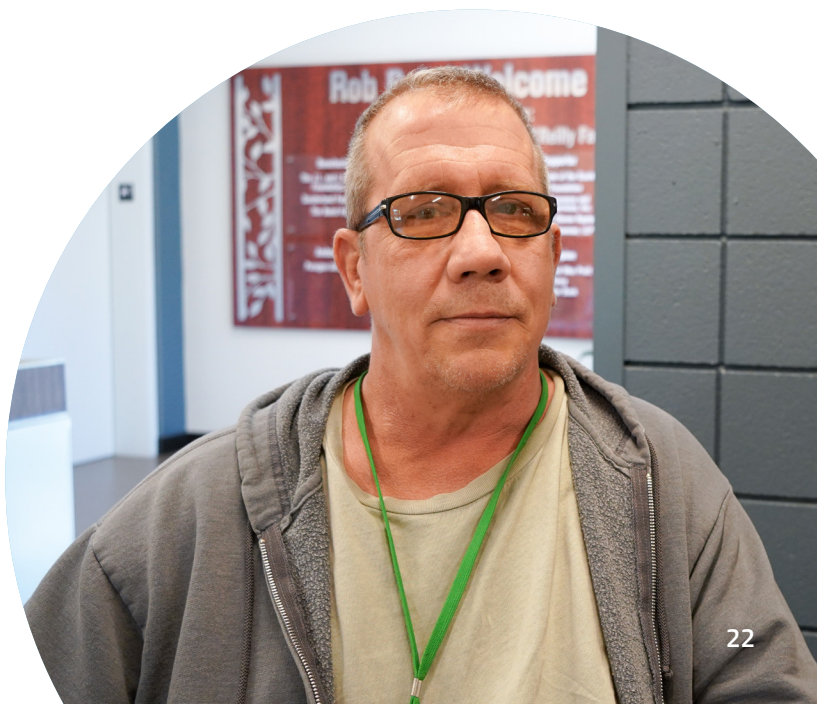


SERVED
4,342
DIFFERENT GUESTS
ON-SITE

MADE
16,213
REFERRALS WITHIN
THE CENTER

20 PARTNERS OFFERING SERVICES ON-SITE

This year we added Jordan Valley Community Health Center, WIC, and the Springfield-Greene County Health Department as well as veterinarian services for pets of our unsheltered guests. Having all of these partners co-located at the O'Reilly Center for Hope allows us to remove barriers to accessing services and make long lasting impacts in people's lives. We also expanded services to offer showers, laundry, and the ability for guests to use the Center as a mailing address to ensure they have access to mail.





CARES ACT SHELTER DIVERSION

124
SERVED



112
DIVERTED

**124 HOUSEHOLDS
IMPACTED BY COVID-19
WORKED WITH OUR
SHELTER DIVERSION
TEAM TO SECURE
HOUSING AND AVOID
GOING TO A SHELTER**

**112 OF THE 124
HOUSEHOLDS OBTAINED
OR MAINTAINED HOUSING
OR WERE OTHERWISE
SUCCESSFULLY DIVERTED
FROM THE SHELTER
SYSTEM**



90%
ARE STILL HOUSED

**90% OF THE HOUSEHOLDS THAT ENGAGED
IN OUR SHELTER DIVERSION SERVICES WERE
SUCCESSFULLY DIVERTED AND REMAINED
HOUSED AT THE END OF THE PROGRAM YEAR**

COMMUNITY & NEIGHBORHOOD DEVELOPMENT

We provide a wide range of services to improve the social, economic, physical, and environmental well-being of our neighborhoods and our community.



NEIGHBORHOOD CLEAN-UPS

We facilitate neighborhood clean-ups for city recognized neighborhood associations in Springfield. These allow residents to dispose of yard waste, old furniture, construction debris and much more, free of charge. This provides a service to the community and helps to keep our neighborhoods clean!

19
CLEAN-UPS

239 TONS OF TRASH REMOVED
18 TONS OF SCRAP METAL RECYCLED
1,565 HOUSEHOLDS SERVED

COMMUNITY COLLABORATIVES

**CHILD ABUSE & NEGLECT • EARLY CARE & EDUCATION
ENVIRONMENT • FOOD • HOUSING • TRANSPORTATION**

We have 6 Community Collaboratives that work to convene people around specific focus areas. These groups identify gaps and create goals to make long lasting positive change in our community. Last year the Collaboratives had **138 different members** representing **57 organizations** that donated **1,087 hours**.

COLLABORATIVE HIGHLIGHTS

Double Up Food Bucks

Our Food Collaborative applied for a Double Up Food Bucks grant and CPO was awarded \$100,000 to implement this program in Springfield. This program incentivizes SNAP users to shop at farmers markets by providing match dollars for SNAP produce purchases. This supports healthy eating, food access and our local economy.



Focus on Transportation

The Let's Go Smart: Transportation Collaborative hosted 3 Walk and Talks focusing on walkability in Springfield. They also partnered with Boys and Girls Club to teach bicycle safety to youth.

Landlord and Tenant Education

The Housing Collaborative hosted a Landlord and Tenant Education event to bring awareness to housing issues in our community and celebrate Fair Housing Month in April.

EMERGENCY RENTAL ASSISTANCE PROGRAM

We received COVID relief funds from Greene County to provide rent and utility assistance to Greene County residents impacted by COVID-19.

WE HELPED
500
HOUSEHOLDS STABILIZE
THEIR LIVING SITUATION

"The weight I've been carrying because of our financial situation the last 6-8 months, and the fears I've had about being able to provide for my kids while also digging us out of this hole we'd gotten into, has probably been the hardest thing I've ever gone through as an adult. [After receiving assistance] was honestly the first day in what seems like forever that I finally felt happy and felt as if everything was going to be okay... You have no idea how much this means to me."

-Emergency Rental Assistance Client

VOLUNTEER INCOME TAX ASSISTANCE

Our Volunteer Income Tax Assistance (VITA) program offers free tax help to people in our community

4,980
TAX RETURNS
PREPARED THAT
BROUGHT IN OVER

\$4,600,000
IN FEDERAL REFUNDS
and
\$1,000,000
IN STATE REFUNDS

MENTORING



We have a number of mentoring programs that work to promote life skills, social skills and academic success. Last year our mentoring services served 648 youth.

BULLDOG BASKETBALL ACADEMY

We worked with 132 Students at 5 locations teaching life and basketball skills.

DYS COMMUNITY MENTORING

We provided mentoring to 17 youth in Division of Youth Services custody and helped 3 youth enroll in college.

AFTER SCHOOL CLUBS

Our team worked with 388 students through 18 clubs such as step team, cooking, wrestling, empowerment groups and student council.

We offered clubs at 6 locations in Springfield and Willard

SAAB: BROTHER 2 BROTHER

We partner with SAAB to help with growing and sustaining this important program. We provide staffing and support that helps students succeed. 142 students are participating in local college and high school chapters. "The support provided by CPO has been integral in making miracles happen for our students who participate in the program. As a sponsor, I have personally witnessed a growth in pride, responsibility and selflessness in these students."

- SPS Staff Member



SOCIAL WORK

We provide both school-based and community-based social work to give flexible support to families in need. Our team advocates, assesses needs, provides education, refers to services, empowers families, and works every day to improve the lives of people in our schools and communities.

SCHOOL-BASED SOCIAL WORK

We partnered with Springfield Public Schools to bring social workers into every school in the district. The program started in October 2021 and by June 2022 we had 13 social workers in 48 schools.

WHAT FAMILIES SAID ABOUT OUR SOCIAL WORKERS...

Our social worker "was there when I needed someone the most during my daughter's surgery"

They "listened and encouraged me"

They gave me "everything I needed"

They "helped me get a bed for my kids"

They "addressed my concerns I had about my children"

"We are in a much better place as a family because of them"

507

STUDENTS REFERRED
BY SCHOOL
COUNSELORS TO OUR
SCHOOL-BASED
SOCIAL WORK TEAM

100%

OF FAMILIES REPORTED
THAT THEIR SITUATION
HAD IMPROVED AFTER
WORKING WITH A
CPO SOCIAL WORKER

BREAKING DOWN TRANSPORTATION BARRIERS

Our team had the opportunity to connect a family to Crash Champions who gave them a new car. This provided safe and reliable transportation to help them become more financially stable. This shows how collaboration can make huge ripple effects in the life of a family.

TRANSPORTATION SUPPORT



We received \$60,000 from Community Foundation of the Ozarks to provide financial support to those facing transportation barriers that impacted their ability to get hired or get to work.

Crisis Intervention

Our community-based
social workers worked with

171 INDIVIDUALS

in crisis

They made

358 REFERRALS

to community services and had

1,615 CONTACTS

with those they served

OUR GENEROUS DONORS

\$50,000+

David & Stacey O'Reilly
Rob & Sally Baird^{OCH}

\$10,000 TO \$15,000

Central Bank of the Ozarks^{MSOM}
Hy-Vee, Inc.
King's Way United Methodist Church^{OCH}
Leslie Peck
O'Reilly Auto Charity Golf Classic
Peck's Insurance and Financial Services

\$5,000 TO \$9,999

Agri-Gro Marketing, IncST
Arvest Bank
Arvest Foundation
Burrell Behavioral Health
Christ Episcopal Church^{CCWS}
Gathering Friends for the Homeless Inc^{OD}
Great Southern Bank^{MSOM}
Dr. Janice Duncan
Larry Stock
Neil & Christina Chanter Family Fund
Price Cutter Charity Championship
SRC
Tal & Rosalie O'Reilly
Wooten Family Foundation Fund
Wilson Essman Fund

\$1,000 TO \$4,999

Anne & Scott Mason
Air Services Heating, Cooling & Plumbing
Bank of America^{MSOM}
BluCurrent Credit Union^{MSOM}
Breakfast Optimist Club of Springfield
Bud & Betty Greve^{OCH}
Carmen & Mike Wiles
Centene Corporation
Charlie & Mary Beth O'Reilly
Christ Episcopal Church
Rector Discretionary Fund^{OD}
Community Foundation of the Ozarks
Country Financial
CoxHealth
Dawn & Todd Schade
David McQueary
EFWHA Charitable Fund
Eric Peterson
Francine Pratt^{PS}
GFWC Sorosis Club
Springfield
Guaranty Bank
Hogan Land Title Company
Jack & Judy Hadsall
Charitable Foundation
Janet & Herb Dankert^{PS}
Jeremy Burcham
Joselyn & Jeff Baldner

Kevin Waterland
Korbal/Bancorp South^{MSOM}
KPM CPAs, PC
Lolita Albers
Loren & Christine Bodendieck^{OD}
Mercy
Mid-Missouri Bank^{MSOM}
Neale & Newman, LLP
Nexstar Media, Inc.
Nixa First Assembly of God^{OD}
Oakstar Bank^{MSOM}
Ollis Family Foundation Fund
Paragon Architecture LLC
Pat Zachary
Pitt Technology Group Charitable Fund
Pratt Consultants, LLC
Queen City Shout, LLC
Redeemer Lutheran Church^{OD}
Robert E Low Charitable Fund
Rosalie O'Reilly Wooten
Sam & June Hamra Family Foundation
Shelley Evans^{OCH}
Springfield Area Chamber of Commerce
Springfield First Community Bank^{MSOM}
Springfield Public Schools

Designations: CCWS = Crisis Cold Weather Shelter, HVTF = Homeless Veterans Task Force, MSOM = Making Sense of Money, OCH = O'Reilly Center for Hope, OD = One Door, PS = Prosper Springfield, ST = STAND Against Trafficking

We are grateful for all of our supporters. Your donations and support enables us to work toward our mission and build a community that we all want to live in.

The Thomas H. &
Josephine Baird
Memorial Fund
The Whitlock Company
Trotter Family
Foundation
Thomas & Pamela
Pierson^{OD}
United Way of the
Ozarks
Vanguard
Walgreens
Wesley United Methodist
Church^{OD}

\$500 TO \$999

Ashley Mann
Ashley & Eric Krug
Barbara Lucks
Brad & Janet Auge
Brian & Keli McDonough
Christina & Dana Ford
City of Springfield
Environmental Services
David Cook
Drury University
Dustin Smith
Emmaus^{OD}
Fidelity Charitable
Fun Art Studios LLCST
JP Morgan Chase^{HVTF}
Katrena Wolfram
Lauren & Ben Haden^{CCWS}
Lindsay & Adam Reichert
Lisa and Terry Langley
Lori & Ben Lampert Fund
Michael Harris
Michelle Reinmiller^{OD}

Milne Family Fund
Nixa Church of Nazarene^{OD}
Patricia Walker
Scott Meier
Sheri & Allen Lupton
Sovereign Grace Baptist
Church^{OD}
Stamina Products Inc
Venues Church^{OD}
Waukita Ray-Swales
William & Christine Wester
William "BJ" & Kellie
Roberts

\$250 TO \$499

All Saints Anglican Church
Anna Evans^{CCWS}
Asbury United Methodist
Church^{OD}
Becky Morgan
Beth & George Polivka
Brian & Renee Fogle
Caira & Jarrod Dortch
Carl Rosenkranz
Catherine Wellever
Cindy & Robert Barcomb
Dr. Alastair &
Melissa Haddow
Dr. Jacob Arnold
Dr. Maryam
Mohammadkhani
Holly Acharya
Jaimie Trussell
Johnathan A SashST
Josh & Wendy Nimmo
Judy Hadsall
Kris & Susan Nau
Lamar Payne
Lois Bullock

Matt Morrow
National Avenue Christian
Church^{OD}
Patrice McDonald
Patricia Deck
Paul & Jennifer Baker
Rachel & Joshua Harrel^{CCWS}
Raeanne Presley
Scott Gilhousen
St. James Episcopal Church
Discretionary Fund^{OD}
Stella & Anthony
Chamberlain
Stephanie Cartwright
Sue Phillips
Suzanne Powers
Willie Mae Evans

\$100 TO \$249

417 Professionals - Power
Connect Alliance
Amanda Stadler
Amy Lewellen
Amy Brixey
Artina Walker
Beth & Craig Keeling
Betsy Fogle
Boy Scout Troop 410^{OCH}
Braden Daughtery
Bridget & Andy Dierks
Bryan Fisher
Cameron Rose
Carol Wooten
Cassandra Siperko^{OCH}
Catosha Woods
Cecilia Deck-Georger
Charlotte Hardin
Cheya Dunlap

OUR GENEROUS DONORS

\$100 TO \$249

Christina Gantt
Chuck & Jody Dow
Clif & Gail Smart
Clint McConnell
Curt Buechter
Dana & Ann Elwell
Danielle Kincaid
Dawn Fitzgerald
Deann Wilson
Dee King
Devin Dankert
Diane Dye
Dr. Grenita Lathan
Dr. Shannon Cuff
Elyse Hartley
Emily Burcham
Emily Smith
Estel Brackett
Geovanny Ponce
Grant Seifried
Gretchen Kunkel
Heather Newman
James & Lea Ann NancyST
Jane Earnhart
Janet Lassley
Jason Gage
Jeanne Toombs
Jim & Christine Rice
Jo Macdonnell
Joe & Lana Loeber, Jr.
John & Whitney Blocker
John & Sandy Rush
Jonna Steinert
Josephine Gardner
Josette & Mike Tilley

Josh & Nicole Holt
Julia Dimmitt
Kathryn Rubens
Katie Towns
Kim Rippy
Lindsay Sparks^{CCWS}
Lisa Clark
Lori Casagrand
Lori Rook
Louie Layton
Maggie Castrey
Marilyn Sexton
Mark & Laurie Entrup
Melissa Clevenger
Michael Gibson
Nathan & Kateryna Thieman
Nicole Jarratt
Nicole Morrison
Pam Evans
Paula Harris
Populous Petty Cash
Rashod Taylor
Reynolds Family Fund^{OCH}
Roberts, McKenzie, Mangan & Cummings
Sandra & David Byrd
Shannon Tilley
Silvia Trinh
Staci Taylor
Stanton Sante^{OD}
Stephanie Darby
Summer Gerhardt
Susie & Will McCrimmons
Tammi Harrington
Tiffany Dye

Todd & Betty Parnell
Tom Finnie
UJIMA Language and Literacy^{PS}
Valley of the Sun United Way
Virginia Roncaglione
VMWare Foundation
Vreni & Martin Jones
William & Regenia Estes^{OCH}
Yolanda Rodriguez

LESS THAN \$100

A Girl Like Me Network
Adam & Cheryl Bodendieck
Adam Darkly
Aiesha Odutayo
Alec Scott
Alex Keenan
Alex Daughtery
Alex Derren
Alice Thompson
Alice Greenfield
Allen Criger
Allison Pilley
Alyssa EverettST
Amanda Coleman
Amanda McVicker
Amanda Rueter
Amber Henry
Amber Lawson
Amber Hill
Amber Sims
Amy Murphy
Amy Tignor
Andrew Saenz

Designations: CCWS = Crisis Cold Weather Shelter, HVTF = Homeless Veterans Task Force,
MSOM = Making Sense of Money, OCH = O'Reilly Center for Hope, OD = One Door,
PS = Prosper Springfield, ST = STAND Against Trafficking

We are grateful for all of our supporters. Your donations and support enables us to work toward our mission and build a community that we all want to live in.

Andrew Fogle
Andy J & Shelia Wright
Angela Schlaack
Angie Miller
Ann Robertson
Ann Marie Hazlett
Ashley Corsolini
Ashley Bouldin-Dye
Ashley Gravitt
Ashley Harms
Ashton Brown
Austin Day
B York
Becky Darrow
Becky Maxwell
Beth Ulianich
Bev Brown
Bob Swanson
Brad Powers
Brandon Gerhardt
Brenda Porterfield
Brenda Treece
Brent Elliott
Brittany Haake
Britten Hill
Brooke Allen
Brooklyn Messer
C.J. Hankins
Caitlin Stratton
Calvin Smith
Cari McNeilis
Carol Searight
Carrie Cook
Catherine Carr
Catherine Gilpin
Cece Segars
Chandler Carlson
Chaney Ledet

Charlotte Lillard
Charrie Dixon
Cherie Croney
Cheyenne Lollar
Chris & Jayne Davis
Christina Wilkins
Christopher Guyer
Christy Wittmaier
Cindy Terrill
Cindy Howell
Cody Flann
Connie Patison
Council of Churches^{OCH}
Courtney Kitrel
Cynthia Smith
Dalene & Earle Doman
Dan Schepers
Dana & Dan Carroll
Daniel Ogunyemi
Danielle Rapp
Darlene Pacino
David Pennington
Deana King
Debra Fontaine
Debra Crockett
Dee Wilson
Dee Walker
Diana Travis
Donald Wright
Donald Ball
Donald & Betty Golik^{OCH}
Ellen Fogle
Emily Biagioni-Paulette
Eric Dye
Eric Lampe
Evan Henslee
Flora-Jean MorganST
Fredrick Jacobi

Garrett Holt
Gary Baldwin
Gary & Linda Norman^{OCH}
Geraldine Cox
Gina Harris
Gina Murray
Ginger Onyeka
Glenda Headlee
Grace Wiley
Greg Burris
Gunnar Johanson
Hailey Rutledge
Hailey Magnus
Hannah King
Hannah Crews
Harold & Darlene
Bensch
Heather Cole
Heather Kennedy
Heather & John Mulford
Helen Votaw^{OCH}
Holly Campbell
Howard Applegate
Iciminda Moore
Jade Coatney
Jade Roberts
James Owens
James Barton
James Metoyer
Jana Cornelis
Jaren Pippitt
Jeff Beagley
Jeff Newman
Jeff & Cora Scott
Jen Morris
Jennifer Roth
Jessica Gilmore
Jessica Wooden

OUR GENEROUS DONORS

LESS THAN \$100

Jill Reynolds
Jim Anderson
Jim Arnott
Joellyn Travis
John Twitty
John KothST
Jonathan Vandiver
Joseph Kinder
Josh Lester
Joy Bilyeu Steele
Joy Bray
Joy Draeger
Juan Meraz
Julie Whitt
Julie Austin
Justin & Whitney
Lockhart
Kaarie Roberts
Kacie Joyce
Kaleigh Gilbert
Karen Dooley
Karen Lane
Karen Willbanks
Karla Gregg
Katelyn Robertson
Kathryn Haley
Katrice Goodrum
Kaylie Gott
Kelly Sisco
Kelsea Morgan
Keri DurbinST
Kerri Williams
Khalilah Rhone
Kim Hardin-Jones
Kimberley Prater
Kiri Horne
Kobe Stewart

Krista Moncado
Krista Martin
Krista Willis
Kristy Ritter
Kyla Jenkins
Kyla Townsend
Lana Stephens
LaToy Kennedy
Laura McWhirt
Laurel Browning^{CCWS}
Lauren Luebbering
LaWanda Williams
Leanne HamptonST
Lee Doran
Lisa Doran
Lisa Crawford
Lisa Shevey
Liz Oglesby
Lorri Sheets
Louise Knauer
Lyn Johnson
Lynda Bain
Madison Campbell
Mae Steiner
Maranda Bishop
Marc Stephens
Maressa Hernandez
Marie Miner
Mark Bruner
Mark & Mary Walker
Mary Magnus
Mary Scalzo
Mary Rolf
Matt Gravitt
Megan Bishop
Megan Arnall
Mel Myears
Melanie Evans-Smith
Meredith Clark

Merideth Swain
Mia Vincent
Michelle Garand
Michelle Myers
Michelle Brackett
Mindy Sadowski
Missi Joplin
Missy Handyside
Misty Harmon
Monica Elliott
Morgan Lira
Nancy Gose
Nancy Hays
Natalie Cauldwell
Nate Dunville
Nathaniel Barbe
Nicole Bass
Nicole Bumgardner
Ozarks Elder Law
Pam Bledsoe
Pamela Clamors
Patricia Barnoskie
Patricia Pattillo
Patrick Malone
Patti Palmer
Paul & Regina Williams
Penney Rector
R Lesley^{OD}
Randi Youngerman-
Nulton
Rachael & Kevin Walsh
Ray Criger
Renee McKinnon
Rhonda Galbraith
Robert Couch
Roman Duszek
Rosie Padron
Russell White

Designations: CCWS = Crisis Cold Weather Shelter, HVTF = Homeless Veterans Task Force,
MSOM = Making Sense of Money, OCH = O'Reilly Center for Hope, OD = One Door,
PS = Prosper Springfield, ST = STAND Against Trafficking

We are grateful for all of our supporters. Your donations and support enables us to work toward our mission and build a community that we all want to live in.

LESS THAN \$100
CONTINUED

Rusty MacLachlan
Ryan Griggs
Ryenne Jacquemin
Sachi Nelson
Sacred Heart Church^{CCWS}
Samantha Elgin
Samantha Maples
Sandra Vincent
Sandy Floyd
Sarah Boyd
Ed & Sarah Derr
Shameika Salvador
Shane Puente
Sharon Reeds

Shelby Butler
Shirell Carter
Shundra Mosley
Solomon Blaenton
Sophie Pierpoint
Springfield Police
Department
Stacey Sawyer
Stacia Ortega
Stephanie Callahan
Stephanie Davis
Stephen Hall
Steve Edwards
Susan Gilbert
Susan Peden
Susan L. Baggett Day

Tami Rutkowski
Tamika Johnson
Tara Nichols
Theresa Crawford
Tiffany Guillory
Tiffany Bouldin
Timothy Smith
Tracy Williams
Tricia Holt
Tyler Drenon
Vickie Phillips
Whitney Creehan
William "Bill" Hennessey
Wyatt Jenkins
Zachary Seminer

THANK YOU FOR YOUR
SUPPORT OVER THE
LAST YEAR!



**WORKING TO CREATE
ALL WANT**



**THE COMMUNITY WE
TO LIVE IN**



OUR MISSION:

**TO FACILITATE AND PROMOTE THE BUILDING OF RESILIENT
CHILDREN, HEALTHY FAMILIES, AND STRONG
NEIGHBORHOODS & COMMUNITIES THROUGH
COLLABORATION, PROGRAMMING, AND
RESOURCE DEVELOPMENT.**

**330 N Jefferson
Springfield, Missouri
65806**

**Phone: 417-888-2020
Email: info@cpozarks.org
www.cpozarks.org**

Community Partnership of the Ozarks is the Priority
Partner of United Way of the Ozarks.

