



COMMUNITY PARTNERSHIP

Working Together to Build Strong Communities



2024 ANNUAL REPORT BUILDING BRIDGES







TABLE OF CONTENTS

	BOARD OF DIRECTORS	1
MESSAGE FROM PRESIDENT/CEO & BOARD CHAIR		2-3
	COMMUNITY IMPACT	4
	FINANCIAL INFORMATION	5
COMMUNITY & NEIGHBORHOOD DEVELOPMENT		6-10
AFFORDABLE HOUSING & HOMELESS PREVENTION		11-14
	PREVENTION & YOUTH SUPPORT	15-17
EARLY CHILDHOOD & FAMILY DEVELOPMENT		18-21
	COMMUNITY COLLABORATIVES	22
YOUNG PROFESSIONAL ADVISORY COUNCIL		23
	OUR GENEROUS DONORS	25-30

BOARD OF DIRECTORS

Jim Arnott

Sheriff
Greene County
Sheriff's Office

Jason Gage

City Manager
City of Springfield

Sam Atkinson

Director of
Strategy &
Operations
Excellence
Mercy Hospital

Judy Hadsall

President and CEO
Multipli Credit
Union

Mindy Mitchem

Executive VP/Chief
Credit Officer
Guaranty Bank

William (B.J.) Roberts

[Board Treasurer]
Vice President,
Finance
Mercy Health -
Springfield
Communities

Rob Baird

CEO &
Chairman of the
Board
Phenix Marble

Barbara Hover

Co-President
Greene County
Medical Society
Alliance (GCMSA)

Matt Morrow

President/CEO
Springfield Area
Chamber of
Commerce

Wyatt Jenkins

Director
Forvis Mazars

Doug Neidigh

Sustainability
Coordinator
Missouri State
University

Grant Seifried

[Board Vice Chair]
Director of Sales
and Marketing
SRC

Joselyn Baldner

President/CEO
Central Bank

Dee King

Chief of Staff
Burrell Behavioral
Health

Jennifer Olson

Executive Director
OACAC

Brandon Taylor

Program Manager
of IT & Security
Dragos, Inc.

Tammy Bates

Program
Manager
Missouri
Department of
Social Services

Dr. Grenita Lathan

Superintendent
Springfield Public
Schools

Charlie O'Reilly

Community
Volunteer

Katie Towns

Director of Health
Springfield-Greene
County Health
Department

David Cook

Community
Volunteer

Barbara Lucks

Consultant

Leslie Peck

President
Peck's Insurance &
Financial Services

Jaimie Trussell

CEO
Council of
Churches of the
Ozarks

Janice Duncan

Community
Volunteer

Rusty MacLachlan

Commissioner 1st
District
Greene County
Commission

David Pennington

Chief
Springfield Fire
Department

Brad Erwin

*[Board
Secretary]*
President
Paragon
Architecture

Anne Mason

Attorney
Neale & Newman

Beth Polivka

VP, Sys Chief
Nursing Officer,
Administration
CoxHealth

Brian Tyndall

General Manager
Mid-West Family
Broadcasting

Ashley Fleming

Grant Program
Officer
Community
Foundation of
the Ozarks

Brian McDonough

[Board Chair]
Vice President &
General Manager
KY3, KSPR, & the
Ozarks CW

Lindsay Reichert

Project Manager
Paragon
Architecture

Brandi

VanAntwerp
President/CEO
United Way of the
Ozarks

Paul Williams

Chief
Springfield Police
Department

MESSAGE FROM OUR PRESIDENT

JANET DANKERT



“EVERY BRIDGE THAT YOU CROSS IN LIFE TAKES YOU TO A PLACE THAT YOU NEVER THOUGHT YOU COULD REACH.”

-Mehment Murat Ildan

Bridges are strong symbols. They stand for connection, resilience, evolution, and progress. That description reminds me so much of CPO and the work we do.

Connection and collaboration are the heart and foundation of CPO. Resilience is a part of our mission and the work we do with families and children. As an organization, we continually evolve as needs and issues change across the communities we serve. And progress at CPO has been significant the past 12 years as we have grown and innovated to meet those needs and create solutions to issues.

Last year, we built many bridges that strengthened our community and positively impacted those we served. We worked with child care providers to provide training and technical assistance that improves quality for the children in their care. We recruited new partners to serve a record number of people at the O'Reilly Center for Hope. We served almost 1,000 students in our Mentor SGF program and after school clubs. We increased suicide prevention efforts through our partnership with Borrow My Angel.

These are just a few examples. Throughout this report, you'll find more outcomes we are proud to share. This work starts with our incredible team, board, partners and volunteers. You all help us not only build bridges but reach places and outcomes we could not reach without you!

MESSAGE FROM OUR BOARD CHAIR

BRIAN MCDONOUGH

**“THEY BUILD
BRIDGES EVERY
DAY THAT HELP
US MEET OUR
MISSION...”**

-Brian McDonough,
Board Chair



As I start my service as Board Chair of Community Partnership of the Ozarks (CPO), I continue to be impressed by the incredible work that CPO accomplishes for our community. They build bridges every day that help us meet our mission of building resilient children, healthy families, and strong neighborhoods & communities.

Reflecting on the past year, our team served or impacted over 120,000 people in our 29 county service area. They recruited and worked with 11,234 volunteers that donated more than 65,000 hours of time to help meet our mission. And through donations of time and resources, they leveraged an additional \$13,904,337 to support our community!

Our impact continued to be focused in these key areas:

- Affordable Housing & Homeless Prevention
- Community & Neighborhood Development
- Early Childhood & Family Development
- Prevention & Youth Support

Our commitment to these key areas ensures we are ready to respond to emerging community issues and then develop innovative ideas to solve those issues in collaboration with our many partners. We also create new and expanded programs and services that meet critical needs in our community.

None of this is possible without the wonderful, dedicated staff. We are so thankful for them and blessed to have the support of many community partners and our Board of Directors. We couldn't do what we do without them and you and we all look forward to the exciting things to come in the next year!

COMMUNITY IMPACT

In the last year, we...



**Served or impacted
120,304 people**

**Had 11,234 volunteers
give 65,705 hours of
their time**

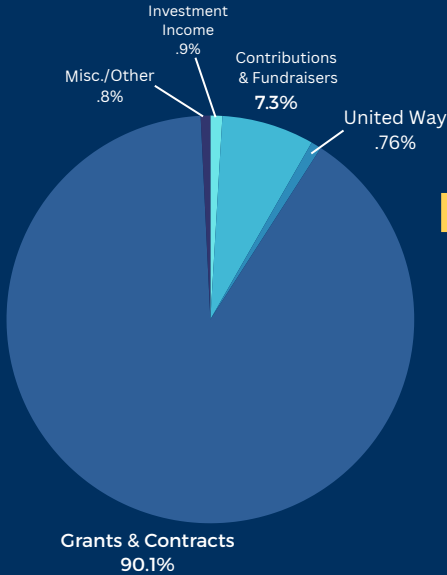


**Leveraged
\$13,904,337 for
our community**

Community Partnership of the Ozarks, Inc. is an independent 501(c)(3) organization that depends on both grant and donor dollars to fund the critical services we provide.

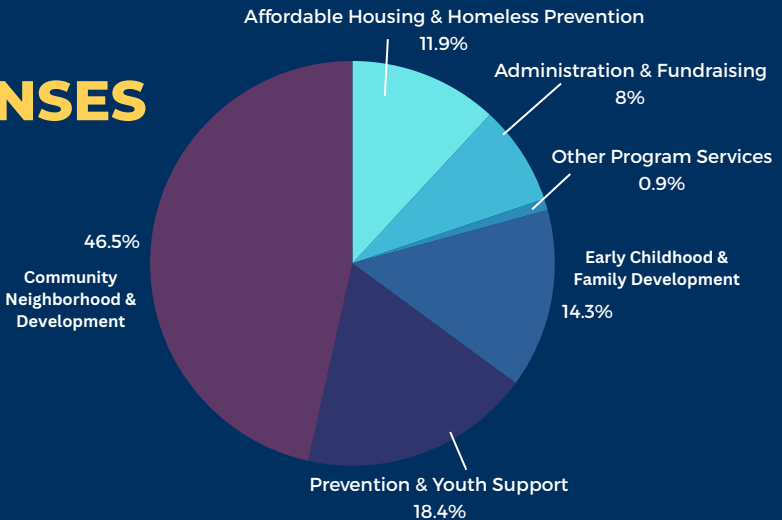
FINANCIAL INFORMATION

For every Caring Communities state dollar received, we leveraged another \$22.84 That's a 228% return on your investment!



REVENUES

EXPENSES



COMMUNITY & NEIGHBORHOOD DEVELOPMENT

We provide a wide range of services to improve the social, economic, physical, and environmental well-being of our neighborhoods, schools and our community.



STUDENT DEVELOPMENT

COMMUNITY BETTERMENT

FAMILY SUPPORT

FINANCIAL STABILITY

STUDENT DEVELOPMENT



AFTER SCHOOL CLUBS

After school clubs provide unique opportunities for students to learn a new skill, develop confidence, and bond with their teachers outside of a structured classroom. Our support provides teachers with funding to purchase supplies for their club that they would not otherwise receive. This year, we supported 9 SPS locations.

- **454 students served**
- **25 clubs**
- **93% said clubs helped them learn the importance of hard work**

"This program is important because it allows our kids to learn, engage, and have fun without having the stress of financial burdens. Thank you, CPO for all you do! We can't thank you enough for the opportunities you allow our youth to experience!" - Club leader

SMALL GROUP & ONE-ON-ONE MENTORING

Mentor SGF provides small group and one-on-one mentoring at 8 SPS locations. The focus is on underserved students to break the poverty cycle prevalent in the communities we serve. We provide consistent, positive role models for students and seek to increase students' self-esteem, confidence, and motivation to thrive in life.

- **138 students served**
- **50% increase from FY23**



"I am grateful for this program...Not only does it help teach social and life skills, but it also provides much-needed support to students who need a listening ear. Thank you, CPO!" - SPS elementary school counselor

STUDENT DEVELOPMENT



BULLDOG BASKETBALL ACADEMY

This initiative prepares students for success in school and life as an adult while providing quality basketball training. The 6th year of Bulldog Basketball was another year of growth with more locations and sessions. We partner with SPS, the Springfield Dream Center, and the Boys & Girls Clubs of Springfield.

- **247 students served**
- **9 different locations**
- **96 engagement opportunities for students**

"The coaches taught me to always stay focused in basketball and life so that I am always my best self!"
- Bulldog Basketball Student

BROTHER-2-BROTHER & SISTERS-2-SISTERS

These programs ensure students have the support needed to excel academically, socially, and professionally. CPO partners with SAAB and SPS to assist in growing and sustaining these important programs.

- **126 students served**
- **25 business suits purchased for students through Black Suit Initiative**
- **Two \$500 Leadership Awards given to students**
- **22 active chapters across middle & high schools**



COMMUNITY BETTERMENT



Nourish the Ozarks

This program distributes free, locally grown food to communities in need across 17 counties in southern Missouri. The counties we serve are some of the most food insecure counties across the state.

- **21,882** people served
- **464** unique distributions across **59** unique locations
- “Farmer Friends” network started to identify and overcome barriers for farmers regarding food deserts
- **83** recipes provided to community members
- Products purchased from **74** farms including **50,584.34 lbs. of fresh, local produce, 699.96 lbs. of meat, and 895** dozen free-range farm eggs

Crime Stoppers

- 1,215 tips were received
- Social media engagement continues to grow, with a 40,000-post reach and 47,000 visits

Neighborhood Education & Support

Neighborhood Cleanups

- 170 tons of waste collected
- 17 tons of scrap metal recycled
- 208 volunteers served 1,301 households

Springfield Tool Library

- Gained 43 new members
- Completed 284 transactions

National Night Out

- 2,000 residents attended



FAMILY SUPPORT



Crisis Intervention

- 610 individuals served
- 170 families served
- 243 community referrals made
- 1,044 family contacts made (phone/email/office visits/home visits)

School Based Social Work

- 1,133 referrals (628 new)
- 8,521 individuals served
- 10,794 contacts with students & families

97.5% of students/families surveyed believe their situation improved after getting involved with a CPO school based social worker.

"[The social worker] made sure that the information was given in a way that I was able to understand...and spent time with my kid, listened and helped in whatever was going on at the moment." -Student/Family

FINANCIAL STABILITY

Volunteer Income Tax Assistance (VITA)

The VITA Program provides IRS-certified tax preparation services to low-to-moderate income taxpayers with income under \$65,000 and seniors.

- 10 VITA Clinic locations within Springfield and Joplin
- 5,992 federal returns and counting (10% increase from last year)
- \$4,089,293 in federal refunds and \$1,546,989 in state refunds
- **Over \$40 million in economic effect and saved our community over \$1.5 million in tax preparation fees**

Making Sense of Money (MSOM)

This program is designed to bring financial equity and stability to marginalized community members.

- 234 people served
- 164 participants became graduates of the Basic Budgeting Series
- After 6 months, there was a 41% increase of graduates using a budget and a 49% increase of graduates saving money

AFFORDABLE HOUSING & HOMELESS PREVENTION

Our Affordable Housing and Homeless Prevention Division works to ensure safe, decent, and affordable housing for everyone. We convene partners and resources to reduce barriers and increase financial stability in our community.



**9,839 GUESTS SERVED AT THE
O'REILLY CENTER FOR HOPE**

**40,590 REFERRALS MADE,
CONNECTING GUESTS TO CRITICAL
COMMUNITY RESOURCES**

DAYS OF HOPE

We provide monthly Days of Hope at the O'Reilly Center for Hope that bring focused services and resources to a single location to remove barriers and increase collaboration among agencies. These free, one-day events provide unique services along with support from partners to offer recurring services including health screenings, resource navigation, and more.



Nutrition Day of Hope provided nutrition and diabetes education.



Vision Day of Hope offered vision exams and glasses.



Hearing Care Day of Hope focused on hearing tests and referrals.



Identification Day of Hope centered on birth certificates and photo IDs.



Showers & Haircuts Day of Hope offered free haircuts and other hygiene needs.

ONE DOOR

When facing a housing crisis, understanding and navigating the systems of services can be confusing and overwhelming. One Door assists in maneuvering through those crucial systems by providing a central point of entry for coordinated intake, assessment, and referrals for housing and shelter services in our community.



1,173 Intake Assessments Completed

Intakes encompassed 2,179 people

400 Referrals to Supportive Housing Services

“When I was homeless CPO didn't give up on me. They were there when nobody else in Springfield was. Without CPO I would have lost hope during my darkest time and wouldn't be here.”

-Jennifer Barnes/Every Voice Council Chair

Success Story - Jennifer Barnes

Jennifer Barnes spent six years experiencing homelessness. During this period she was arrested multiple times, abused drugs, and even attempted suicide. She credits CPO and the people there for not giving up on her. Through CPO's resources, she turned her life around and is now committed to sobriety, stably housed, and is a leader at her job at a local company. CPO made such a significant impact on her, that she wanted to give back and is now the Chair of the **Every Voice Counts Council**, which consists entirely of people with direct lived experience of homelessness and provides CPO and the Ozarks Alliance to End Homelessness with expert independent advice.

OZARKS ALLIANCE TO END HOMELSSNESS CRISIS COLD WEATHER SHELTER PROGRAM

Every winter, overnight Crisis Cold Weather Shelters open in our community to provide additional emergency shelter beds. We work with local churches, organizations, and volunteers to ensure that everyone has a safe place to go during freezing temperatures.

**Over 400 Individuals
volunteered at Crisis
Cold Weather Shelters**

**10,187 bed nights
provided**



**January was the peak
month with 227 people
sheltered per night.**



**Crisis Cold Weather Shelter
volunteers served over 25,000 meals.**



**An average of 183 people were given
a warm place to sleep each night the
shelters were open.**

PREVENTION & YOUTH SUPPORT



We coordinate and support mental health awareness and suicide prevention as well as substance use and misuse prevention efforts across 21 counties in Missouri

Mental Health Promotion

Suicide Prevention

Substance Use Prevention

Celebrating 10 years!

MENTAL HEALTH FIRST AID

We provide adult, youth, and teen Mental Health First Aid that teaches participants how to identify, understand, and respond to signs of mental illnesses and substance use disorders.

IN THE PAST 10 YEARS WE HAVE...

Provided Mental Health First Aid trainings to more than 14,000 adults & teens across Southwest Missouri.

Started Teen Mental Health First Aid at Springfield Public Schools which is now taught to all 10th graders each year.

Lowered the percentage of Greene County students who seriously considered suicide by 6.26%

Provided more than 25,000 service referrals for those who may have been experiencing mental health challenges or crises.



"CPO has been a leader and at the forefront in bringing awareness to the importance of mental health. I have seen the difference Mental Health First Aid has made in our community and it is invaluable. Thank you, CPO!"

-Chief Paul Williams, Springfield Police Dept

SUICIDE PREVENTION



Borrow My Angel

CPO formalized a new partnership to promote mental wellness and suicide prevention. Borrow My Angel was founded by Chuck Dow who lost two siblings to suicide. About 60 people participated in the first annual Wing Walk for suicide prevention awareness.



2024 Missouri Student Survey

This survey assessed 6-12th grade students in Greene, Christian, and Howell Counties. This survey showed that due to CPO's work, there are vast improvements across the board in the number of students who considered, planned, or attempted suicide in 2024 compared to 2022.

"I'm truly grateful for CPO and this partnership. I look forward to expanding our efforts to create more positive impact around mental health awareness and suicide prevention."
- Chuck Dow, Borrow My Angel Founder

SUBSTANCE USE PREVENTION



2024 Missouri Student Survey

- The 2024 Missouri Student Survey shows CPO's prevention efforts are working! According to the survey, the use of use of e-cigarettes decreased by 3.5% while alcohol use also decreased by 2.5%.

Greene Co Tobacco & Vape Prevention Coalition

- New vaping education campaign reached 660,000 people.
- 403 vape devices were collected and recycled across Greene County schools.
- 3,578 middle school students & 1,379 9th grade students learned about the impact vaping has on their bodies.

EARLY CHILDHOOD & FAMILY DEVELOPMENT



We are here for children and families in our community by providing services focused on school readiness, positive early childhood development, family support, and quality child care for preschoolers.

Events

Healthy Families

First Birthday

Family Focused Network

Child Care Collaborative Network

EVENTS

2024 COMMUNITY WIDE PLAY DAY



A day for fun, families, & face painting! A true community collaboration with 18 partner agencies represented.

2024 BIG RIG NIGHT



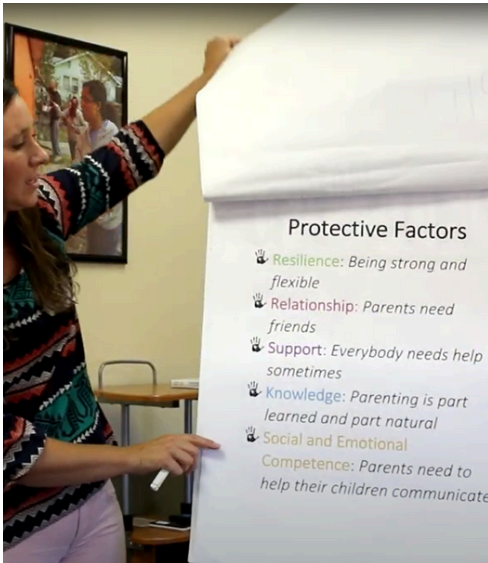
Smiles as big as the rigs! Over 5,500 people in attendance with more than 20 big rigs



Healthy Families

The Healthy Families Program works with families to provide resources, support, and education in the parent's home. 70% of Healthy Families referrals come from Children's Division for families involved with the child welfare system.

- Served 97 families
- 73% visit completion rate
- Hosted 12 **Parent Cafes** which are designed to strengthen families from the inside out by having facilitators lead peer-to-peer activities and discussions to teach the five Strengthening Families™ protective factors to learn how to navigate difficult parenting situations.



First Birthday



Our First Birthday Program serves families who are in their 3rd trimester or have a child who is up to 6 months old that does not have a safe sleep option. Our home visitors serve 28 counties in Southwest Missouri and provide safe sleep education along with a pack-n-play for each family.

241 families served!



*"CPO was able to come to us, and give us all this information to keep Aria safe which was extremely helpful. This is information we wouldn't have known about. Thank you, CPO for helping keep our baby safe."
-Cody & Trinity*

FAMILY FOCUSED NETWORK

Our Family Focused Network offers a coordinated referral and intake system to help families access home visiting programs across a 47-county service region. Our goal is to ensure that all families that want to participate in home visiting are served by a program that best fits their families' needs.

- **703 Referrals Received**
- **Hosted the first of its kind regional Home Visiting Conference**
- **A total of 112 professionals trained through our network on a variety of topics**



CHILD CARE COLLABORATIVE NETWORK

The Child Care Collaborative Network focuses on providing coordinated support through on-site consultations, coaching, and training to child care providers in 17 counties in Southwest Missouri. The goal is to increase knowledge and skills of child care providers and to implement strategies to promote high quality, responsive, and relationship-based care for children and families.

- **Completed 302.25 hours of on-site consulting or coaching**
- **Completed 143.5 training hours for preschool, infant toddler, and home-based child care providers**



COMMUNITY COLLABORATIVES



CPO's Collaboratives identify gaps and create goals to make long-lasting positive change. The Council of Collaboratives is comprised of leadership of each Collaborative and works to provide paths for cross collaboration over a broad range of community issues.

3,008.25 Volunteer hours

241 Unique Organizations Represented:

- Child Abuse and Neglect Collaborative
- Environmental Collaborative
- Food Collaborative
- Housing Collaborative
- Let's Go Smart: Transportation Collaborative
- Health Equity Collaborative
- Early Care & Education Collaborative
- Have Faith Initiative

YOUNG PROFESSIONAL ADVISORY COUNCIL



Our Young Professional Advisory Council (YPAC) is a dynamic group of young professionals serving as a committee under the CPO Board of Directors. This group works with the Board to help meet our mission to build resilient children, healthy families, and strong neighborhoods and communities.

Sam Atkinson
Mercy Hospital

Benjamin Beranek
Missouri State
University

Kayla Bruno
Commerce Bank

Stella Chamberlain
Chamberlain Realtors

Michael Gibson
KY3

Angel Gonzales
CoxHealth

Dr. Daniel Gutierrez
Ozarks Technical
Community College

Myla Koons
Synergy Wealth Solutions

Ginger Onyeka
(YPAC Secretary)
CoxHealth

Joseph Peck
(YPAC Vice Chair)
Great Southern Bank

Lindsay Reichert
(YPAC Chair)
Paragon Architecture

Anthony Shavies
Community Volunteer

Emily Smith
(YPAC Social Chair)
Twin Oaks Country Club

THANK
YOU

TO OUR ANNUAL
PRESENTING SPONSOR!



Central Bank

Strong roots. Endless possibilities.™

We are grateful for the incredible support we receive from Central Bank of the Ozarks. They are invested in our community and working to make it a better place for everyone.

OUR GENEROUS DONORS

\$20,000 +

Bass Pro/Huntsman Holdings, LLC
Bobby Allison Charitable Trust
Central Bank of The Ozarks
Charlie & Mary Beth O'Reilly
Charles Brown
Forvis Mazar
Mercy Hospital
O'Reilly Auto Charity Golf Classic
Paragon Architecture

\$10,000 - \$19,999

Charlie & Mary Beth O'Reilly Family Foundation
David & Stacey O'Reilly
Hy-Vee, Inc.
Jake Wayne Properties, LLC
Mr. Electric - Toms Enterprises, LLC
O'Reilly Auto Parts
Peck's Insurance & Financial Services
Threshold of Hope, Inc
Veterans United Foundation

\$5,000 - \$9,999

CFO President's Fund
Community Foundation of The Ozarks (CFO)
CoxHealth
Dr. Nick Pfannenstiel
Hunter Cox
Gathering Friends for the Homeless, Inc.
Gerald W or Susan E. Popek/Prine
Great Southern Bank
Guaranty Bank
Jami & Kevin Cheffey
Larry Stock
Legacy Bank Foundation
Missouri State University
Oke-Thomas Associates Inc.
Pat Zachary SRC
Tal and Rosalie O'Reilly Wooten Family Foundation Fund

\$1,000 - \$4,999

3M Foundation
Acura of Springfield
Air Services DBA AS Heating, Cooling & Plumbing, LLC
Alfred Andersen
Alicia Allen
All Saints Anglican Church
Anne Mason

\$1,000 - \$4,999

Arvest Bank
Ashley Popejoy
Beth Polivka
Bud & Betty Greve
Burrell Behavioral Health
Carol & Daniel Wooten
Christ Episcopal Church Rector Discretionary Fund
Christine Ann Stark
Combat Veterans Motorcycle Association
Commerce Bank
Dani Vess
Daniel McDowell
Daniel Mosier
David McQueary
Dr. George & Katie Heinz
Dr. Janice Duncan
Empower: Abilities
Encore Rehab & Development LLC
Eric Peterson
Eway, LLC
Expedia Group
Francine M. Pratt
GFWC Sorosis Club of Springfield
Hamra Management Company, LLC
Hiland Dairy Foods
Janet & Herb Dankert
Jasmine Williams
Jeremy Burcham
Joselyn & Jeff Baldner
JPMorgan Chase
Judy Hadsall
Julia Henson

OUR GENEROUS DONORS

\$1,000 - \$4,999

Justice Jewelers
Kari Smith
Kaye Clark
Kevin Waterland
King's Way United
Methodist Church
Kinne Family Fund
KPM Technology, LLC
KYTV-TV (KY3)
Larry P O'Reilly & Family
Foundation
Leslie Peck
Lindsay & Adam
Reichert
Lisa & Terry Langley
Maribeth & Maella
Blalock
Marwan Jaoudeh
Melissa Wehner
Missouri Foundation
for Health (MFH)
Missouri State
University
Foundation
Nakato Japanese
Steakhouse & Sushi
Bar
National Avenue
Christian Church
Neale & Newman, LLP
Oakstar Bank
Prime, Inc.
PROMO FUND
Queen City Shout, LLC

Robert E Low
Charitable
Fund
Rosalie O'Reilly
Wooten
Sadaf Sohrab
Sam and June Hamra
Family Foundation
Secily Devese
Shelley Evans
Simmons Bank
Springfield Area
Chamber
of Commerce
Springfield Business
Journal
Springfield Convention
& Visitors Bureau
St. James Episcopal
Church
Discretionary Fund
Sunrise Rotary Club of
Springfield
Susan & Stanley
Parrish
Temporary Fund for
Baird
The Bank of Missouri
The Downtown
Church of Springfield
Missouri
Tiffany Montgomery
Volt Credit Union
Wesley United
Methodist Church

\$500 - \$999

Abby Glenn
Angela Phillips
Barbara Hover
Barbara Lucks
Benjamin Beranek
Betsy Fogle
Boeing
Brad Erwin
Brett Lorenzen
Brian McDonough
Bridget & Andy Dierks
Brooks Miller
Carmen & Mike Wiles
Ceceley Clifton
Cheyenne McLean
Christina Craig
Clif & Gail Smart
Commerce Trust
Coyotes Adobe Cafe &
Bar Inc.
Curly Que Catering
Dana & Ann Elwell
Darline & Sean Mabins
David & Christen
Argueta
David Cook
DHD Group LLC DBA
King's Asian Chef
Emmaus
Fleet Reserve Assn. Inc.
Grant Seifried
Greg and Betsy Burris
Gregory & Susie
Gammon
Jack and Judy Hadsall
Charitable
Foundation

OUR GENEROUS DONORS

\$500 - \$999

Jaimie Trussell
Janell Scott
Jason Gage
Jennifer Olson
Jimm Swafford
Joe Peck
Justin & Whitney
Lockhart
Kurt Larson
Lauren Sawyer
MaryAnne & Joe
Dotson
Mindy Mitchem
Missouri State
University
College of Business
Nathan Steinbaugh
Nathan Tonlaar
Nixa Church of
Nazarene
Northside Christian
Church
Peck/Morgan
Discretionary Fund
Richelle Lewers
Ross Chaffin
Sam Atkinson
Sheri & Allen Lupton
Sovereign Grace
Baptist
Church
State Bank of
Southwest MO
Susie & Will
McCrimmons
Tamara Conn
Telly Jenkins
Vanessa Holt
Washington Avenue
Baptist Church
Wayne Dipper
William (B.J.) Roberts
Wyatt Jenkins

\$250 - \$499

Alex & Cathy Primm
Alex Johnson
Alyea & Noah
Alldredge
Angel Gonzales
Anthony Manasseri
Ashleigh Goris
Ashley Casad
Benjamin King
Bill & Dawn
Hennessey
Brandon Walker
Brandy & Dusty
Bewley
Cameron Casad
Char Berquist & John
Bourhis
Chelsea Gilliam
Chuck & Jody Dow
Cindy & Robert
Barcomb
Clayton Davis
Cora & Jeff Scott
Danielle Myers
Deb & Ralph Glazner
Dee King
Developmental
Center
of the Ozarks (DCO)
Diana Bayer
Dina Readinger
Don & Patti Hargrove
Dr. Alastair & Melissa
Haddow
Finley Bewley
Heather Youngblood
James Robles
Jane & Ed Mellers
Jann Holland
Jerry Grant
John Dobyns

John Rispoli
Johnny McNeil
Julia Flax
Kate Trokey-Harris
Kay Sewell
Keith & Kim Chaffin
La Dona LLC
Larry Paulette
Leslie Harshaw
Lucinda Sparks
Lynette & Tim
Ferguson
Matthew Moore
Paddio
Paul Williams
Raeanne Presley
Randy Alberhasky
Rob & Sally Baird
Ryan Mattix
Ryan Savage
Sarah Jarvis
Shawn Greene
St. John's Episcopal
Church
Stephanie Cartwright
Susan Hunt
The Kitchen, Inc.
The Roost Bar & Grill
Tyler Gunlock
Venues Church
Wanda Burton
Zoomin Groomin

OUR GENEROUS DONORS

\$100 - \$249

Adam & Cheryl
Bodendieck
Adriana Failla
Allison Eckhardt
Amber Eftink
Bandi Kolbe
Barbara Vicente
Becky Morgan
Bev Reichert
Blake Martin
Brad & Catherine Luikart
Brad Oliver
Brian Tyndall
Brittany Edwards
Brooke Perkins
Caitlyn & Matt Tolliver
Catholic Charities of
Southern Missouri
Chad Snapp
Charity & Paul Elmer
Charity Jordan Rex
Chena Simmons
Chip & Jackie Wagner
Chris & Jayne Davis
Cindy Mergen
Clay & Michelle Bowler
Craig Smith
Dan Schepers
Darla Boice
David & Shirley
Hutchison
Denny & Mariana Hush
Diane Nicholas
Doug Fast
Doug Neidigh
Dr. Grenita Lathan
Dr. Jacob Arnold
Dynamic DNA
Laboratories
Ed Zeller
Elizabeth Eley
Emily & Gunnar
Johanson
Eric & Jill Tolliver
Eric H & Mary E Schnelle
Ettie Berneking
First Unitarian
Universalist
Church of Springfield
Franklin Lopez
Ginger Onyeka
Grant Rahmeyer

Greater Ozarks Regional
Breastfeeding Coalition
Hailey & Dalton (Dodson)
Conrad
Heather McGuigan
Heather Swearengin
Hyda James Hill
Jake Hargis
James P or Lea Ann Nancy
Janet Connor
Jason Frans
Jason Saliba
JB Auctions
Jean Grabeel
Jean Lawson
Jennifer Murray
Jessica Creekmore
Jill Reynolds
Jim & Janean Deitchler
Jo Gardner
Jody Hoffman
Joe & Lana Loeber, Jr.
John Litzsinger
John & Lori Snow
Jonathan Miller
Jordana Vera
Judy White
K&C Stepping Stones, LLC
KA or RU Laferriere
Kathleen Fisher
Kathleen Purvis
Katie Towns
Kayla Bruno
Kelly & Louise Knauer
Fund
Kim & Mark Sill
Kip Williams
Kristy Chastain
Kyle Moats
Lamar Payne
Laura McWhirt
Laura Santana
Laura Young
LeaAnn Ellison
Lendi Siguenza
Lesley Escamilla
Lindsey Dumas-Bell
Lindy Eberhardt
Lisa Farmer
Lloyd Babcock
Construction
Mackenzie Nichting
Maggie Castrey
Marilee Robinson
Mark & Natalie Miller

Mark McQueary
Matt Morrow
Meleah Spencer
Melissa McNeil
Melissa VanDerLinden
Michael Houge
Michael Readinger
Mihlfeld & Associates
Mike & Nancy White
Mike Mitchell
Mothers Brewing Co, LLC
Nan & Stan Bess
Nancy Parrish
Nancy Williams
Nixa First Assembly of
God
Patrick Tetrack
Phil Readinger
Rachel Tripp
Rebecca Saunders
Rhonda Sorensen
Richard Brown
Robert & Linda Thieman
Robert Eckert
Robin Latorra
Ron & Leslie Carrier
Ross E & Kay B
Bebout
Rusty Worley
Ryan Kruger
Sandra & David Byrd
Sarah & David Muegge
Scott Houge
Secoy Hodges
Sera Maldonado
Shawn Crump
Shawna Combs
Shawna Conyers
Spencer Ernst
St. Joseph's Church
Steve Miller
Steve Underwood
Sue Robinson
Teresa Esparza
Teresa Mills
Tiana & Jeffrey Shaver
Tim Piland
Twila Hillme
Tyler Gallion
Unite of Southwest
Missouri, Inc
Vicki Owens
Whitney Weddle
Winter and Marshall
Kinne Family Fund

OUR GENEROUS DONORS

Less Than \$100

Abby Terhark
Adam Darkly
Adrian Russell
Ajanette Labellarte
Alex Buckman
Alicia Chaves
Alicia Loper
Alyssa Guck
Alyssa Watkins
Amanda McDonald
Amanda Ritter
Amber Schatz
Amy Fessler
Amy Lee Day
Amy Shelley
Andrea N McKinney
Andrea Smith
Andy & Shelia Wright
Anne Riggs
Anthony Shavies
Ariana Jackson
Ashley Beverage
Ashley Mumford
Bailey Burdin
Barb Houser
Becky Maxwell
Becky Shipley
Becky Volz
Beth Harkins
Beth Watson
Better Business Bureau
Bleeka Pratt
Brad & Janet Auge
Brandi Bowden
Brandi Eilenstein
Brandon Beld
Brenda Rosebrough
Brenda Sims
Brigette White
Brittany Buckmaster
Cameo Hopper
Carley Yettaw
Carol & Brad Oliver
Family Fund
Carol Bader
Carol Gibson
Carolyn Esparza
Carrie Nelson
Case Howard
Catherine White
Cathy Curry
Cathy Heathcock
Cati Plein
Celeste Dickson
Chad Walters
Charleen Fields
Cheryl Doran
Cheryl Mitchell
Christina Jarvis
Christina Rizzo
Cindi Reichgeld
Cindy White
CJ Smith
Clarissa Robinson
Clay & Cindi Goddard
Curtis King
Damien Rich
Damon Paige
Dana Crane
Dana Pond
Danielle Kincaid
Darla Schuerger
Dave Smay
David Pennington
Dean Rund
Deborah & Dane
Thompson/Galloway
Deborah Duzan
Deborah Ingram
Deborah Olson
Deborah Timmerman
Debra Crockett
Denise Williams
Deputy Derek James
Diane Dickinson
Diane Snow
Dillon Baugh
Doug Nichting
Duan Gavel
Dustin Kelso
Elaine ONeal
Elizabeth Berger
Elizabeth Planesi
Ellen Bean
Ellen Fogle
Ellen Herbig
Emaly Keyes
Emily Fessler
Emma Datema
EmmaLea Smith
Eric Schmidt
Erica Lindquist
Erin Downing
Erin Porter
Evonne Wolfe
Faith Fraser
Felicia Riley
Gabbi Nichting
Galen Roberts
Garrett Nichting
Gary Gallion
Gay Nichting
George Freeman
Gina Murray
Hannah Crews
Hannah King
Harold & Darlene
Bengsch
Heath & Jennifer Keller
Holly Clark
Holly LaCaze
Jaclyn Durbin
Jacob Martin
Jaime Orlando
James Morris
Janet Andersen
Janet Percy
Jani Arnold
Janine Laschober
Jean Knapp
Jeanie Skibiski
Jenna Moreland
Jennifer Koontz
Jennifer Lewis
Jennifer Rich
Jerry & Joan Gentry
Jessica Bergeon
Jessica Haddix
Jhasmine Watson
Jill Carr
JMC Management, LLC
John Davis
John Toner
John Wall
JoJo Nichting
Jordan Milford
Joshua Holland
Joy Draeger
Joyce Wong-Hsu
Judi Gage
Kacy Irby
Kalleigh Hickory
Kara & Stan Turner

OUR GENEROUS DONORS

Less Than \$100 Continued

Karen Ducker
Karen Poulson
Karl & Rebecca Kime
Kate Orlandi
Kathy Prater
Kaylee Factor
Keith Mullins
Kelly Sisco
Ken McClure
Kendal Dingus
Kendra Bollinger
Kenny Weatherford
Kenzie Moreland
Kiley Arnold
Kristy Carter
Ladina Vanzandt
Lagena Jenkins
Landon & Lindze
McCarter
Landon Kluesner
Lauren & Ryan Tarrence
League of Women
Voters of Southwest
Missouri
LeeAnn Wolf
Leo Bentley
Lisa Comstock
Lisa Gardner
Lisa Leech
Lisa Stark
Lisa Vandaveer
Liz Kendrick
Luke Dawson
Lynn Morris
Maddie Moreland
Madison Foreman
Madison Hillenburg
Mandy Anthes
Mandy Vela
Marc Hukill
Marcy Ibrahim
Mariah Datema
Marisa Guerin
Mark Mierkowski
Marsha Martin
Mary Anderson
Maureen Templeman
Maxine Brown
Megan Medley
Megan Waddle

Melinda Gleaton
Melissa Austin
Melody Bateman
Michael Reeder
Michelle Garand
Michelle Shadwick
Miranda Manning
Monique Gibson
Monique Ritchie
Multipli Credit Union
Myla Koons
Nancy Gose
Nancy Hunter
Natalie Lyle
Nicole Bass
Olivia Flax
Paige Goodnight
Paige Rippee
Pam Sawyers
Patricia Perry
Patrick J & Cynthia L
Mueller
Peggy Isaac
Penny Lacy
Philip Maas
Rachel Russell
Raeganne Djourlev
Rashod Taylor
Raymond Gonzales
Rebekah Bowman
Regina Hower
Rob Dickerson
Robert Evans
Robert Gallion
Robin Daniels
Robin Schilling
Rodney Roberts
Ron Weis
Roni Blanche
Ross McMurdo
Russell & Mary Beth
Carney/Mann
Rusty MacLachlan
Ryan Baker
Ryan Baxter
Rylie Neal
Samantha Goodnight
Sandi Moore
Sandra Dangelo
Sandra Davis
Sarah Wilk

Scholastic Broadcasting
Scott Moore
Shannon Carnelson
Shannon Markowitz
Sharon Degnan
Sheila Perez
Sierra Chitwood
Sony Hocklander
Stacey Goodale
Stephen McAlister
Sue Gryniewicz
Summer Trotter
Susan Cadwallader
Susan L. Baggett Day
Susan McLeod
Susan P Carter
Susan Toll
Tamera Jahnke
Tammy Bates
Teddi Nichting
Terri Tombridge
Terry Barakat
Theodore Szura
Tim McConville
Tom Knichel
Tonya Raines
Travis Gathman
Trevor Price
Trish Huelga
Tyler Maddux
Valerie Paulette
Vanessa Moreno
Vicki Clark
Victoria Marino
Yuva Sugumar
Zachary Hyden

ANNUAL SPONSORS

*Thank you to our Annual Sponsors
for your support over the last year!*







COMMUNITY PARTNERSHIP

Working Together to Build Strong Communities

Community Partnership of the Ozarks is proud to be the Priority Partner of United Way of the Ozarks.



**OUR MISSION:
TO FACILITATE AND PROMOTE THE BUILDING OF
RESILIENT CHILDREN, HEALTHY FAMILIES, AND
STRONG NEIGHBORHOODS & COMMUNITIES
THROUGH COLLABORATION, PROGRAMMING, AND
RESOURCE DEVELOPMENT.**

COMMUNITY PARTNERSHIP OF THE OZARKS
330 N JEFFERSON
SPRINGFIELD, MO 65806
WWW.CPOZARKS.ORG